

Masport®

CHIPPER SHREDDERS

Chipper Shredder

Part Numbers	Chipper Shredder	936914	Quantum XTS60
	Chipper Shredder - Electric Start	936917	Quantum XTS60
	Chipper Shredder 10.5HP	936916	Quantum 10.5HP
	Chipper Shredder Chute	936918	

From Serial Number 1404661

www.outdoorliving.com

Date and Year of First Manufacture: August 2003

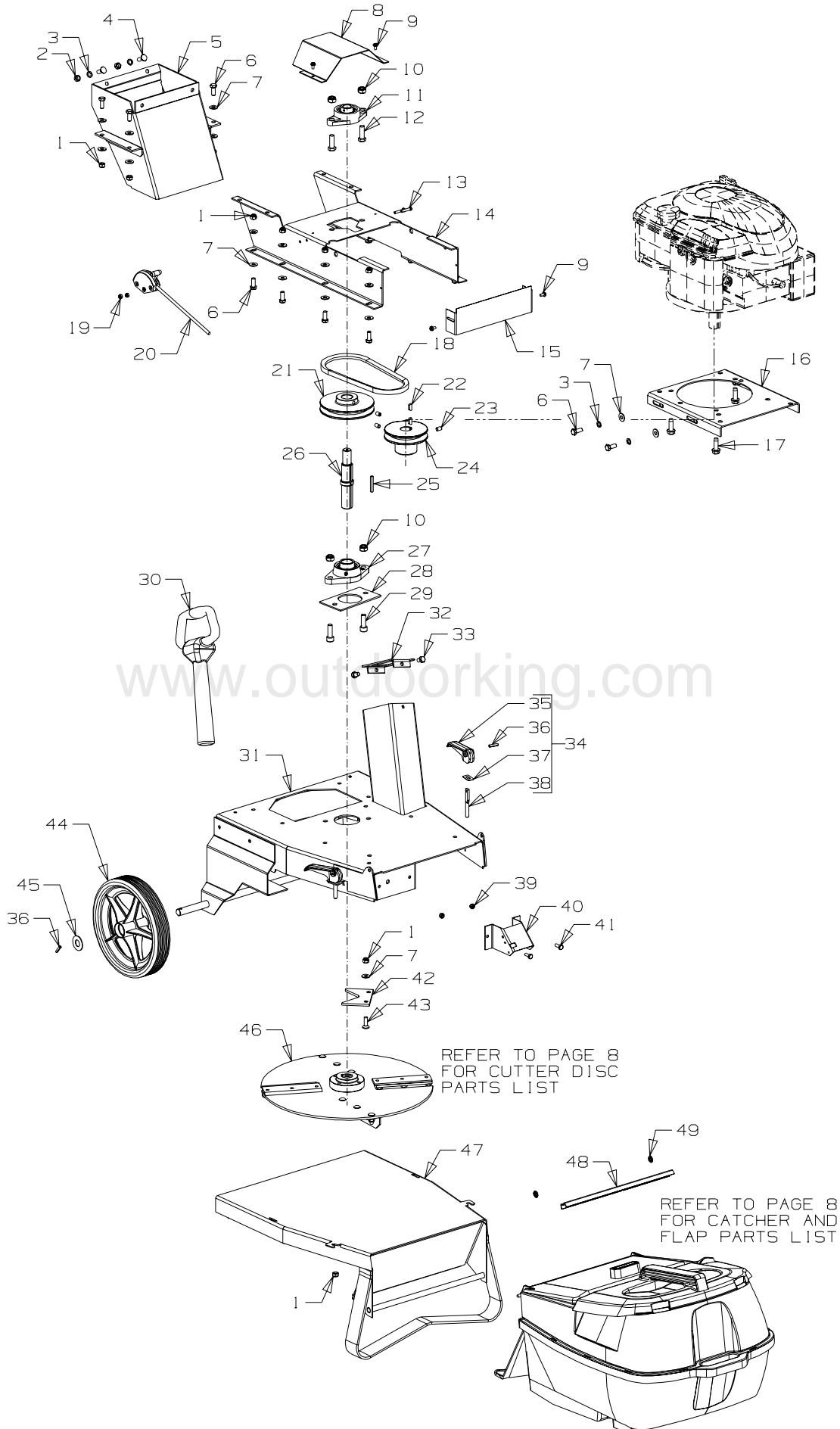




Chipper Shredder
 Powered By: Briggs & Stratton Quantum XTS60
Chipper Shredder - Electric Start
 Powered By: Briggs & Stratton Quantum XTS60
10.5hp Chipper Shredder
 Powered By: Briggs & Stratton Quantum 10.5hp

Masport®

CHIPPER SHREDDER



When ordering PLEASE QUOTE PART NUMBER & Description, NOT Illustration No.
 Determine right or left hand side from standing in viewing position



Chipper Shredder
 Powered By: Briggs & Stratton Quantum XTS60
Chipper Shredder - Electric Start
 Powered By: Briggs & Stratton Quantum XTS60
10.5hp Chipper Shredder
 Powered By: Briggs & Stratton Quantum 10.5hp



**CHIPPER
SHREDDER**

Item No	Part No	Description	Qty	Item No	Part No	Description	Qty
1	501793	Nut, Nyloc M8	15	29	503823	Screw-Cap, M10 x 30	2
2	501602	Nut, M8 Hex	2	30	582374	Plunger-Intake Tube	1
3	503747	Washer, Spring 8mm	6	31	936136	Deck Assy-Upper - Green	1
4	501862	Bolt, Carrage M8 x 20	2	32	936154	Restrictor-Infeed Tube	1
5	936160	Mount Assy-Chute - Black	1	33	501863	Screw, Set M8 x 12	2
6	501597	Screw, Set M8 x 20	15	34	980456	Cam Lock Assy	2
7	501606	Washer, Flat 8 x 19 x 1.6	28	35	580313	•Lever-Handle Locking	2
8	936163	Cover-Bearing	1	36	503369	• Pin-Tension 3/16" x 7/8" (2)	4
9	503630	Screw; S/T 10 x .4	4	37	016777	•Washer-Slipper	2
10	501680	Nut, Nyloc M10	4	38	580690	• Stud-Handle Lock	2
11	503751	Bearing-Complete	1	39	501764	Nut, Nyloc M6	2
12	501696	Screw, Set M10 x 30	2	40	936140	Plate-Stop, Flap - Green	1
13	501061	Screw-Set M5 x 25	2	41	501702	Screw, Set M6 x 16	2
14	936134	Plate-Mount, Engine - Black	1	42	536164	Block-Cutter	1
15	936166	Guard-Belt	1	43	599501	Screw, CSK M8 x 25	2
16	936157	Plate-Fastening, Motor	1	44	536013	Wheel Assy- 228mm	2
17	580453	Screw; S/T 3/8" x 1 1/8"	3	45	502017	Washer, Flat 16 x 35 x 1.6	2
18	536152	Belt-V AX 24	1	46	936135	Cutter Assy	1
19	503511	Nut-Nyloc M5	2	47	936132	Deck Assy-Lower - Green	1
20	536179	Control-Throttle	1	48	583151	Seal-Flap, Dust - Plastic	1
21	536173	Pulley-Driven, 25mm SV	1	49	503574	Clip-Starlock, 6 Dia	2
22	503363	Key-Woodruff 5/8" 3/16" x 1/4"	2			NOT ILLUSTRATED	
23	501831	Screw, Grub M8 x 12	3				
24	536172	Pulley-Engine, 25mm SV	1	536126	Decal-Danger "Chipper Inlet"	1	
25	536012	Key-Engine 3/16" x 3/16" x 38	1	536127	Decal-Danger "Discharge Opening"	1	
26	536151	Shaft-Cutter Drive	1	536149	Owners Manual	1	
27	503802	Bearing-Complete, 25mm	1	503532	Guard-Muffler	1	
28	936206	Spacer-Bearing	1	936209	Kit-Spacer, Pulley	1	

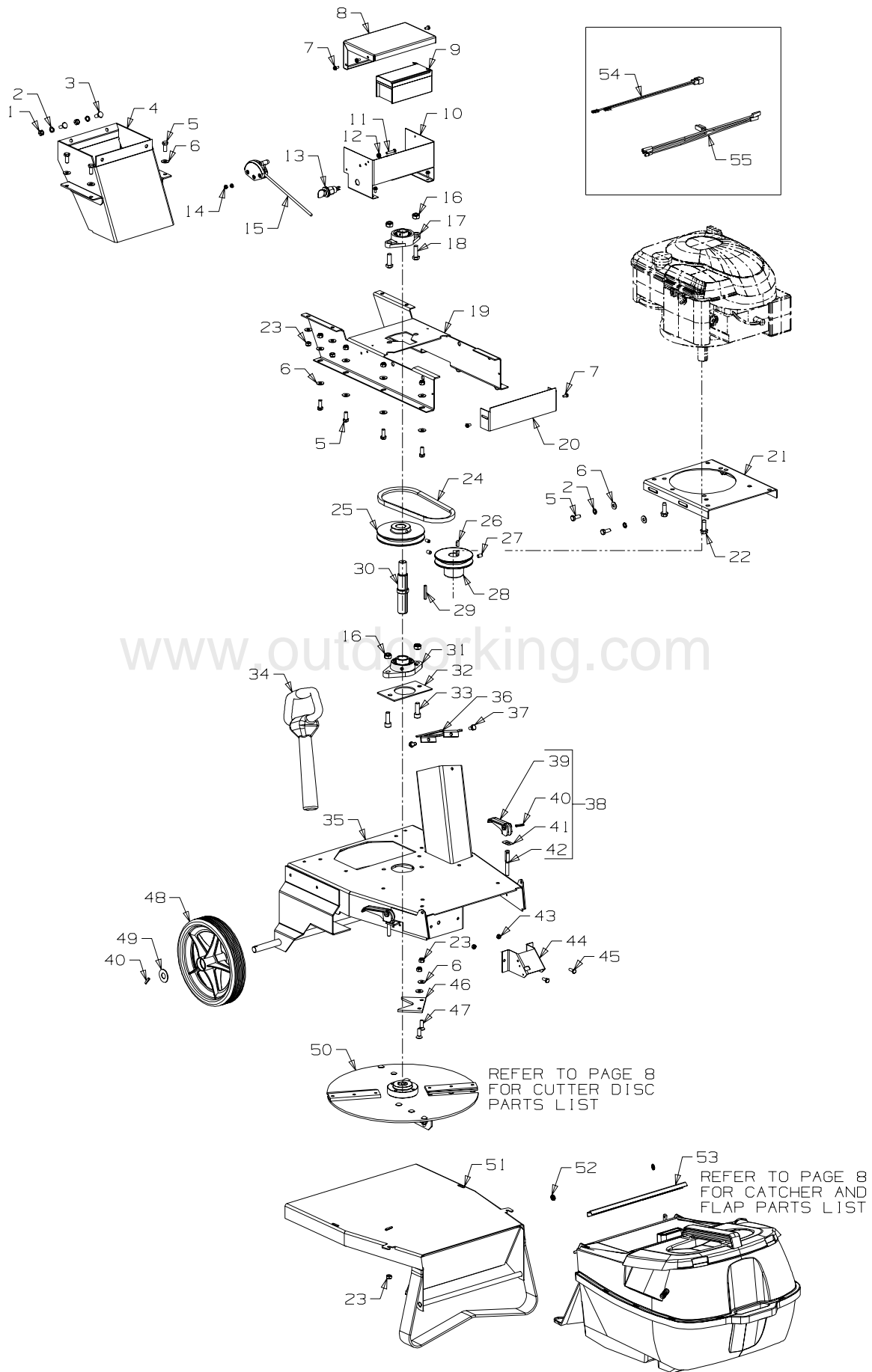
Bold Text = Assemblies
Bulleted Text = Items included in Assemblies



Chipper Shredder
 Powered By: Briggs & Stratton Quantum XTS60
Chipper Shredder - Electric Start
 Powered By: Briggs & Stratton Quantum XTS60
10.5hp Chipper Shredder
 Powered By: Briggs & Stratton Quantum 10.5hp

Masport®

CHIPPER SHREDDER - Electric Start





Chipper Shredder
 Powered By: Briggs & Stratton Quantum XTS60
Chipper Shredder - Electric Start
 Powered By: Briggs & Stratton Quantum XTS60
10.5hp Chipper Shredder
 Powered By: Briggs & Stratton Quantum 10.5hp



**CHIPPER
 SHREDDER
 - Electric Start**

Item No	Part No	Description	Qty	Item No	Part No	Description	Qty
1	501602	Nut, M8 Hex	2	33	503823	Screw-Cap, M10 x 30	2
2	503747	Washer, Spring 8mm	6	34	582374	Plunger-Intake Tube	1
3	501862	Bolt, Carrage M8 x 20	2	35	936136	Deck Assy-Upper - Green	1
4	936160	Mount Assy-Chute - Black	1	36	936154	Restrictor-Infeed Tube	1
5	501597	Screw, Set M8 x 20	15	37	501863	Screw, Set M8 x 12	2
6	501606	Washer, Flat 8 x 19 x 1.6	30	38	980456	Cam Lock Assy	2
7	503630	Screw; S/T 10 x .4	8	39	580313	•Lever-Handle Locking	2
8	936184	Lid-Battery Bracket	1	40	503369	• Pin; Tension 3/16" x 7/8" (2)	4
9	582213	Battery-12V	1	41	016777	•Washer-Slipper	2
10	936183	Bracket-Battery	1	42	580690	• Stud-Handle Lock	2
11	501061	Screw-Set, M5 x 25	2	43	501764	Nut, Nyloc M6	2
12	501330	Washer-Flat, 5 x 10 x 1	12	44	936140	Plate-Stop, Flap - Green	1
13	503261	Switch, Key Operated	1	45	501702	Screw, Set M6 x 16	2
14	503511	Nut-Nyloc, M5	2	46	536164	Block-Cutter	1
15	536179	Control-Throttle	1	47	599501	Screw, CSK M8 x 25	2
16	501680	Nut, Nyloc M10	6	48	536013	Wheel Assy- 228mm	2
17	503751	Bearing-Complete	1	49	502017	Washer, Flat 16 x 35 x 1.6	4
18	501696	Screw, Set M10 x 30	2	50	936135	Cutter Assy-Disc	1
19	936134	Plate-Mount, Engine - Black	1	51	936132	Deck Assy-Lower - Green	1
20	936166	Guard-Belt	1	52	503574	Clip-Starlock, 6 Dia	2
21	936157	Plate-Fastening, Motor	1	53	583151	Seal-Flap, Dust - Plastic	1
22	580453	Screw; S/T 3/8" x 1 1/8"	3	54	536186	Loom-Wiring, Battery	1
23	501793	Nut, Nyloc M8	15	55	936182	Loom Assy-Starter Switch	1
24	536152	Belt-V AX 24	1			NOT ILLUSTRATED	
25	536173	Pulley-Driven, 25mm SV	1				
26	503363	Key-Woodruff 5/8" 3/16" x 1/4"	2	536126		Decal-Danger "Chipper Inlet"	1
27	501831	Screw, Grub M8 x 12	3	536127		Decal-Danger "Discharge Opening"	1
28	536172	Pulley-Engine, 25mm SV	1	536149		Owners Manual	1
29	536012	Key-Engine 3/16" x 3/16" x 38	1	581362		Foam, Flap-Self Adhesive	2
30	536151	Shaft-Cutter Drive	1	736191		Kit-Battery Charger	1
31	503802	Bearing-Complete, 25mm	1	503532		Guard-Muffler	1
32	936206	Spacer-Bearing	1	936209		Kit-Spacer, Pulley	1

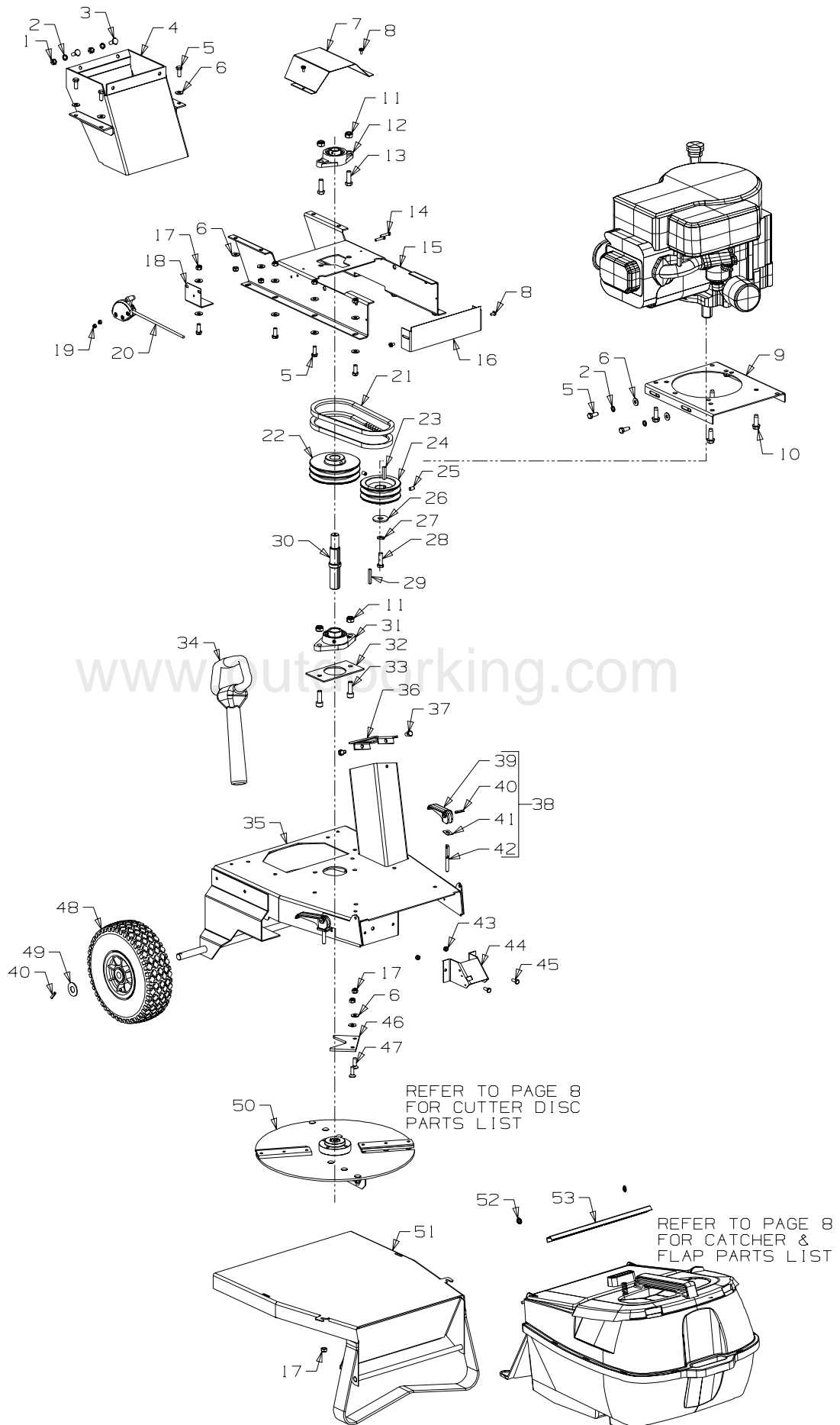
Bold Text = Assemblies
Bulleted Text = Items included in Assemblies



Chipper Shredder
 Powered By: Briggs & Stratton Quantum XTS60
Chipper Shredder - Electric Start
 Powered By: Briggs & Stratton Quantum XTS60
10.5hp Chipper Shredder
 Powered By: Briggs & Stratton Quantum 10.5hp

Masport®

**CHIPPER
 SHREDDER**
- 10.5hp



When ordering PLEASE QUOTE PART NUMBER & Description, NOT Illustration No.
 Determine right or left hand side from standing in viewing position



Chipper Shredder
 Powered By: Briggs & Stratton Quantum XTS60
Chipper Shredder - Electric Start
 Powered By: Briggs & Stratton Quantum XTS60
10.5hp Chipper Shredder
 Powered By: Briggs & Stratton Quantum 10.5hp



**CHIPPER
 SHREDDER
 - 10.5hp**

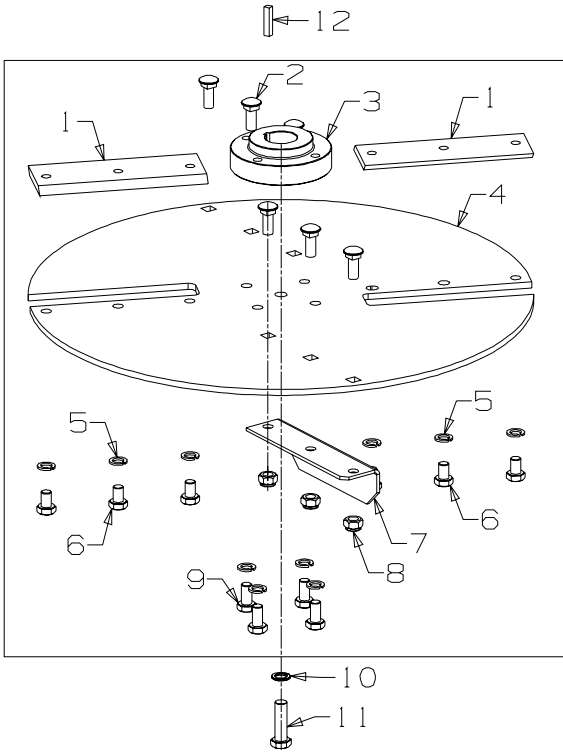
Item No	Part No	Description	Qty	Item No	Part No	Description	Qty
1	501602	Nut, M8	2	32	503823	Screw-Cap, M10 x 30	2
2	503747	Washer, Spring 8mm	6	33	503823	Screw, Cap M10 x 30	2
3	501862	Bolt, Carrage M8 x 20	2	34	582374	Plunger-Intake Tube	1
4	936160	Mount Assy	1	35	936136	Deck Assy-Upper - Green	1
5	501597	Screw, Set M8 x 20	15	36	936154	Restrictor-Infeed Tube	1
6	501606	Washer, Flat 8 x 19 x 1.6	28	37	501863	Screw, Set M8 x 12	2
7	936163	Cover-Bearing	1	38	980456	Cam Lock Assy	2
8	503630	Screw; S/T 10 x .4	4	39	580313	•Lever-Handle Locking	2
9	936157	Plate-Fastening, Motor	1	40	503369	• Pin; Tension 3/16" x 7/8" (2)	4
10	580453	Screw; S/T 3/8" x 1 1/8" UNC	4	41	016777	•Washer-Slipper	2
11	501680	Nut-Nyloc, M10	4	42	580690	• Stud-Handle Lock	2
12	503751	Bearing-Complete	1	43	501764	Nut-Nyloc, M6	2
13	501696	Screw, Set M10 x 30	2	44	936140	Plate-Stop, Flap - Green	1
14	501061	Screw, Set M5 x 25	2	45	501702	Screw, Set M6 x 16	2
15	936134	Plate-Mount, Engine	1	46	536164	Block-Cutter	1
16	936166	Guard-Belt	1	47	599501	Screw, CSK M8 x 25	2
17	501793	Nut-Nyloc, M8	15	48	536199	Wheel Assy	2
18	936193	Bracket-Mount, Throttle	1	49	502017	Washer, Flat 16 x 35 x 1.6	2
19	503511	Nut-Nyloc, M5	2	50	936135	Cutter Assy-Shredder	1
20	536179	Control-Throttle	1	51	936132	Deck Assy-Lower - Green	1
21	536152	Belt-V AX24	2	52	503574	Clip-Starlock, 6 Dia	2
22	536181	Pulley-Driven, 25mm DV	1	53	583151	Seal-Flap, Dust - Plastic	1
23	536064	Key-Engine 1/4" x 1/4" x 32	1				
24	536150	Pulley-Engine, 1" DV	1				
25	501831	Screw, Grub M8 x 12	3			NOT ILLUSTRATED	
26	557066	Washer-Flat 13 x 38 x 3	1				
27	501030	Washer-Spring 7/16"	1	556730	Tube-Inner, Wheel		1
28	503836	Screw-Set NF 7/16" x .75	1	536126	Decal-Danger "Chipper Inlet"		1
29	536012	Key-Engine 3/16" x 3/16" x 38	1	536127	Decal-Danger "Discharge Opening"		1
30	536151	Shaft-Cutter Drive	1	536149	Owners Manual		1
31	503802	Bearing-Complete, 25mm	1	936208	Kit-Spacer, Pulley		1

Bold Text = Assemblies
Bulleted Text = Items included in Assemblies

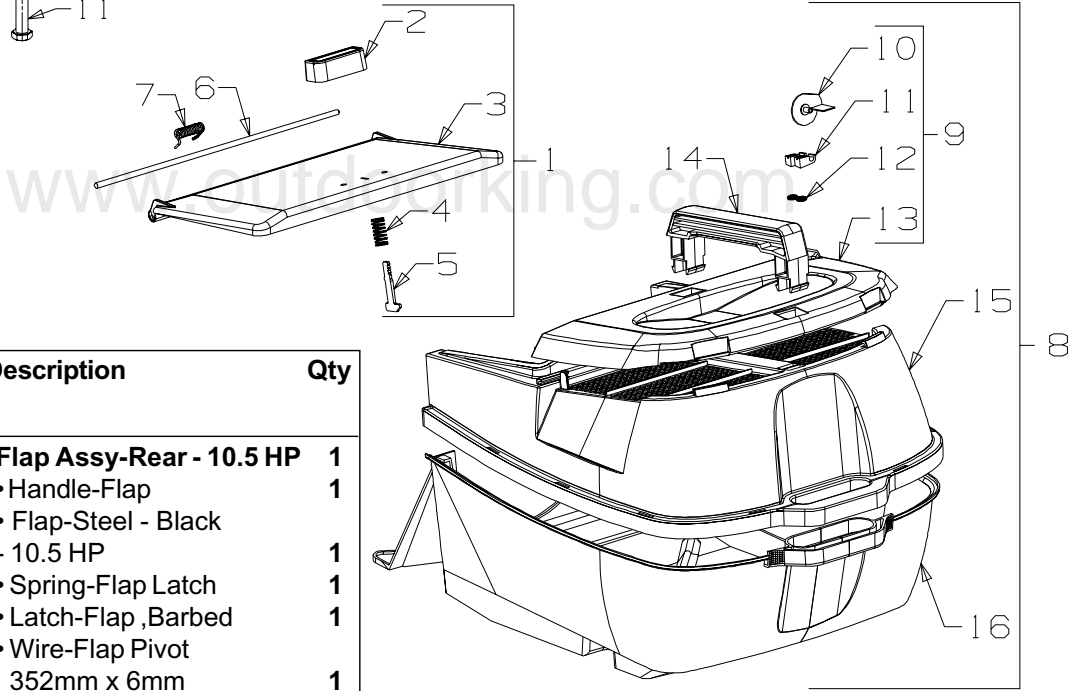


Chipper Shredder
 Powered By: Briggs & Stratton Quantum XTS60
Chipper Shredder - Electric Start
 Powered By: Briggs & Stratton Quantum XTS60
10.5hp Chipper Shredder
 Powered By: Briggs & Stratton Quantum 10.5hp

Masport®



Item No	Part No	Description	Qty
	936135	Cutter Assy-Shredder	1
1	536130	• Blade-Chipper, 134mm	2
2	501862	• Bolt, Carrage M8 x 20	6
3	536138	• Driver-Cutter Assy	1
4	936137	• Cutter-Disc	1
5	503747	• Washer; Spring 8mm	10
6	503830	• Screw-Set M8 x 12	6
7	936134	• Vane-Impellor	2
8	501793	• Nut-Nyloc M8	6
9	501571	• Screw-Set M8 x 16	4
10	500204	Washer; Spring 3/8"	1
11	581610	Screw; Set NF 3/8" x 1.25	1
12	536178	Key-Cutter 3/16" x 3/16" x 24	1



Item No	Part No	Description	Qty
1	781153	Flap Assy-Rear - 10.5 HP	1
2	580602	• Handle-Flap	1
3	981153	• Flap-Steel - Black - 10.5 HP	1
4	581106	• Spring-Flap Latch	1
5	981650	• Latch-Flap ,Barbed	1
6	581743	• Wire-Flap Pivot 352mm x 6mm	1
7	581349	• Spring-Flap	1
1	782200	Flap Assy-Rear - XTS60	1
2	580602	• Handle-Flap	1
3	581517	• Flap-Plastic - Black	1
4	581106	• Spring-Flap Latch	1
5	981650	• Latch-Flap ,Barbed	1
6	581743	• Wire-Flap Pivot 352mm x 6mm	1
7	581349	• Spring-Flap	1

Bold Text = Assemblies
Bulleted Text = Items included in Assemblies

Item No	Part No	Description	Qty
8	783006	Catcher Assy-Plastic	1
9	783112	• Lid Assy-Catcher (incl. items 10-13)	1
10		• Indicator-Catcher	1
11	582550	• Clamp-Indicator, Lid	2
12	503381	• Clip-Starlock, 4 Dia	2
13		• Catcher-Lid	1
14	580673	• Catcher-Handle	1
15	580671	• Catcher-Top	1
16	580672	• Catcher-Bottom	1
	582568	• Decal-Indicator	1

Bold Text = Assemblies
Bulleted Text = Items included in Assemblies

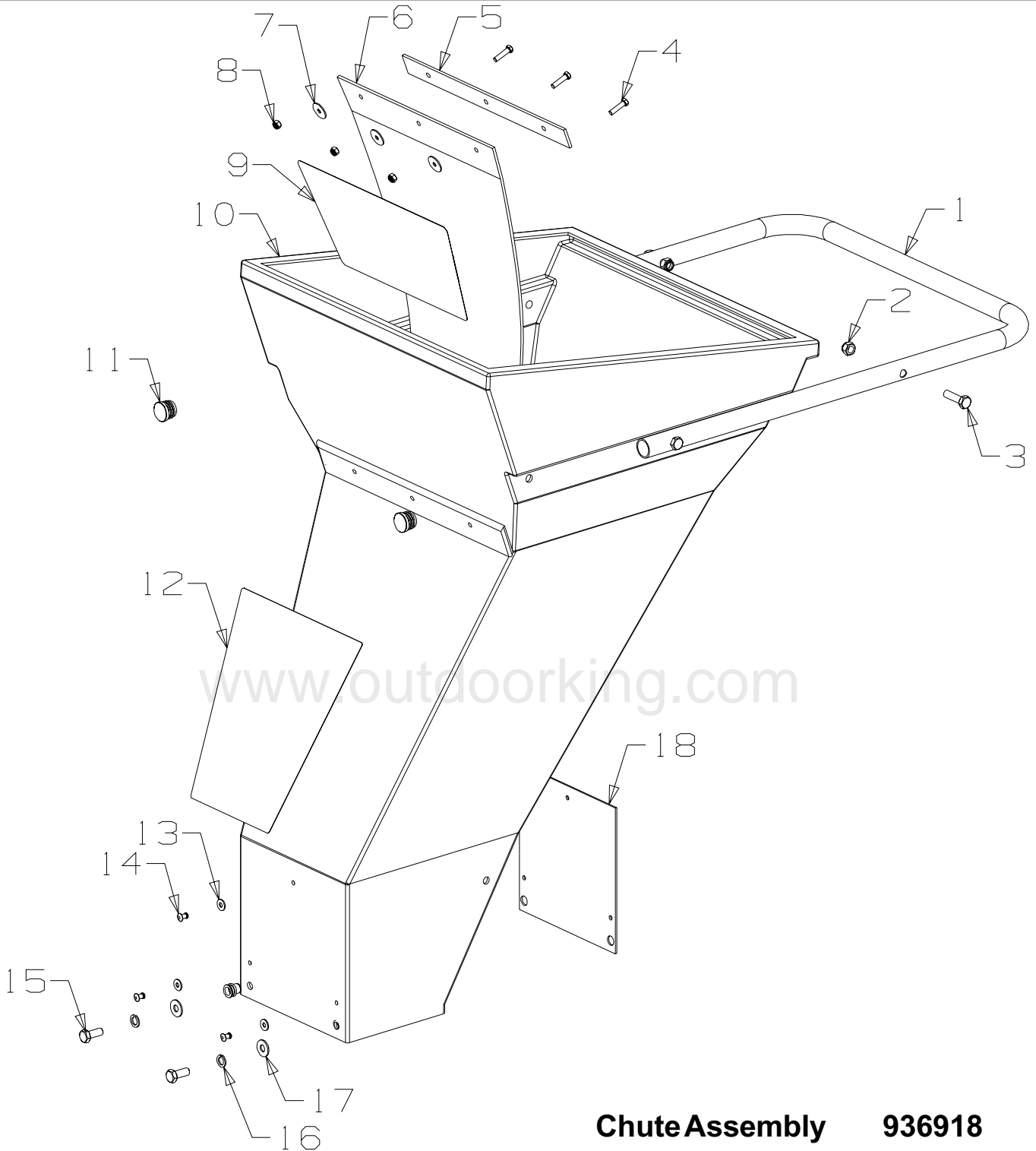
When ordering PLEASE QUOTE PART NUMBER & Description, NOT Illustration No.
 Determine right or left hand side from standing in viewing position



Chipper Shredder
 Powered By: Briggs & Stratton Quantum XTS60
 Chipper Shredder - Electric Start
 Powered By: Briggs & Stratton Quantum XTS60
 10.5hp Chipper Shredder
 Powered By: Briggs & Stratton Quantum 10.5hp

Masport

**CHIPPER
 SHREDDER
 CHUTE**



Chute Assembly 936918

Item No	Part No	Description	Qty	Item No	Part No	Description	Qty
1	936063	Handle-Chute	1	10	536058	Chute - Black	1
2	501793	Nut, Nyloc M8	4	11	503319	Plug-22mm	2
3	501685	Screw, Set M8 x 30	4	12	536180	Decal-Chute	1
4	503727	Screw, Set M5 x 20	3	13	500848	Washer; Flat 3/16" x .5	3
5	936062	Plate-Kickback	1	14	503660	Rivet-Pop 4.8 Dia x 9.0	3
6	536060	Flap-Chute, Rubber	1	15	501597	Screw, Set M8 x 20	2
7	503512	Washer, Flat 5 x 22 x 1.5	3	16	503747	Washer, Spring 8mm	2
8	503511	Nut, Nyloc M5	3	17	501606	Washer, Flat 8 x 19 x 1.6	2
9	536123	Decal-Danger	1	18	936061	Plate-Protector, Front	1

When ordering PLEASE QUOTE PART NUMBER & Description, NOT Illustration No.
 Determine right or left hand side from standing in viewing position