



Parts Manual

Mfg. No: 881880
Yard King, 16" Steel Self Propelled Walk
Behind Mower



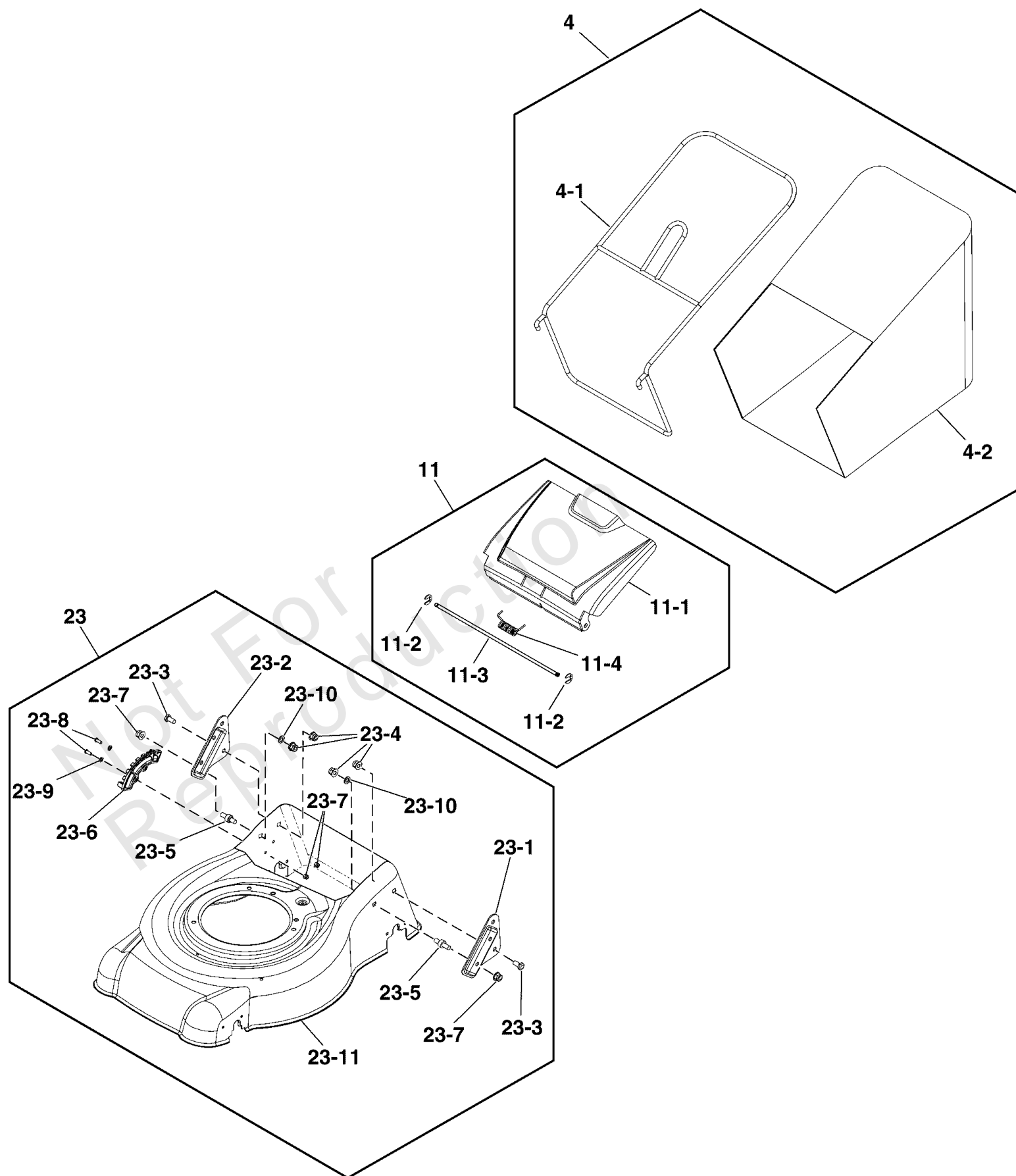
Model Components	Page
Deck & Catcher Group.....	4
Engine & Blade Group.....	6
Engine Service Parts.....	8
Handles & Control Group.....	10
Rear Axle Group.....	12
Wheels Group.....	14
Torque Specification Chart.....	16

Not For
Reproduction

Deck & Catcher Group

Note: Unless noted otherwise, use the standard torque specifications

Mfg. No: 881880



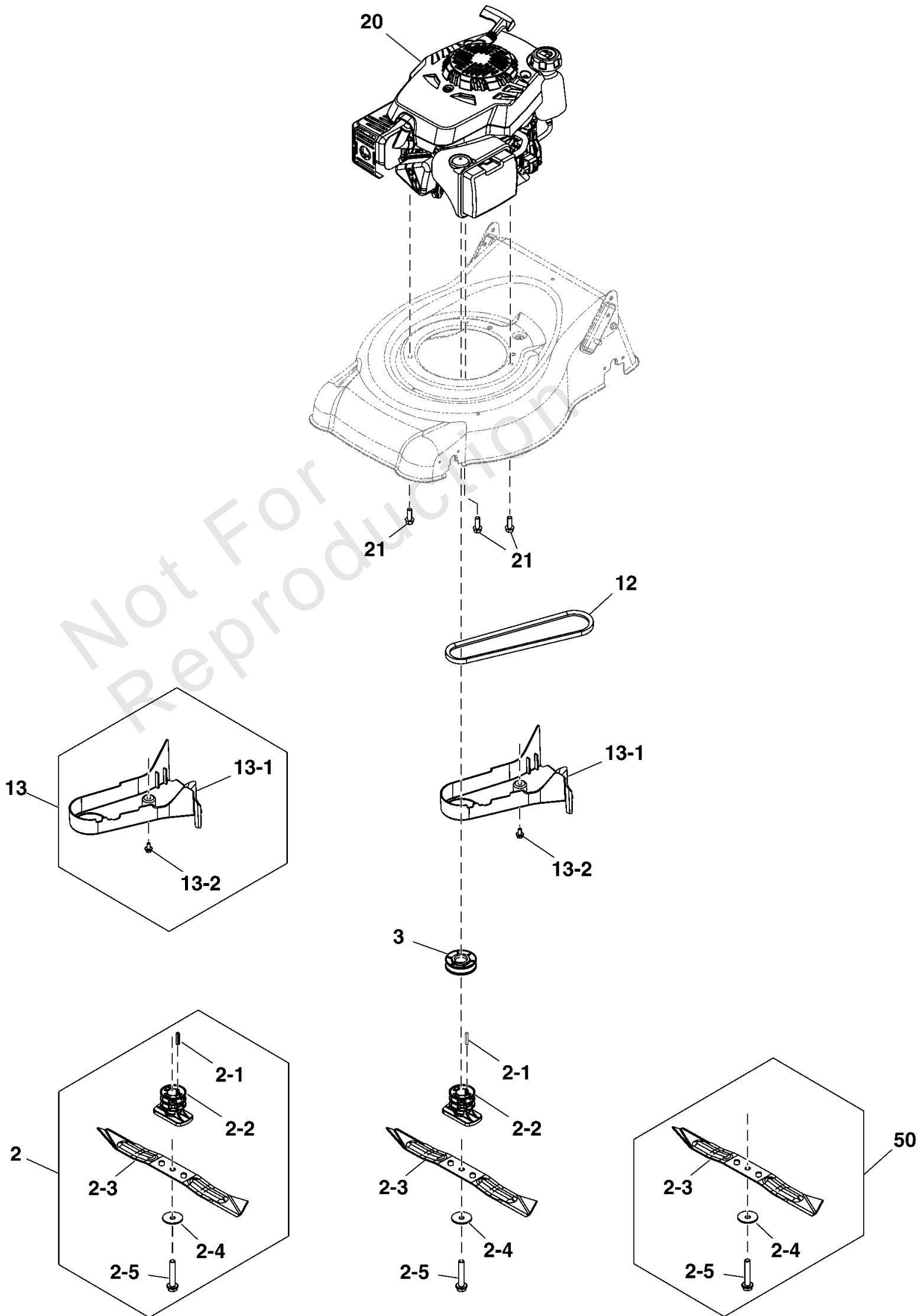
Deck & Catcher Group

REF NO	PART NO	QTY	DESCRIPTION
4	CH87726A	1	GRASS CATCHER ASSEMBLY -(Includes Ref. Nos. 1-1, 1-2)
4-1	-----	1	FRAME, Grass Catcher, 16" Deck
4-2	-----	1	BAG, Grass Catcher, 16" Deck
11	CH87759A	1	REAR FLAP ASSEMBLY -(Includes Ref. Nos. 6-1 through 6-4)
11-1	-----	1	FLAP, Rear
11-2	-----	1	SPRING, Rear Flap
11-3	-----	2	RETAINING RING, E6
11-4	-----	1	ROD, Rear Flap Pivot
23	CH87878A	1	BASEPLATE, Assembly, Yellow -(Includes Ref. Nos. 23-1 through 23-11)
23-1	-----	2	BOLT, M8 x 16
23-2	-----	1	BRACKET, Lower Handle, RH
23-3	-----	2	WASHER
23-4	-----	4	NUT, Hex Head, Flange, M8
23-5	-----	2	NUT, Nyloc, M5
23-6	CH87768A	1	BRACKET, Height Adjustment
23-7	-----	2	BOLT
23-8	-----	1	DECK
23-9	CH87768A	1	BRACKET, Height Adjustment
23-10	-----	2	WASHER, 5
23-11	-----	2	BOLT, Hex, M5 x 12

Engine & Blade Group

Note: Unless noted otherwise, use the standard torque specifications

Mfg. No: 881880



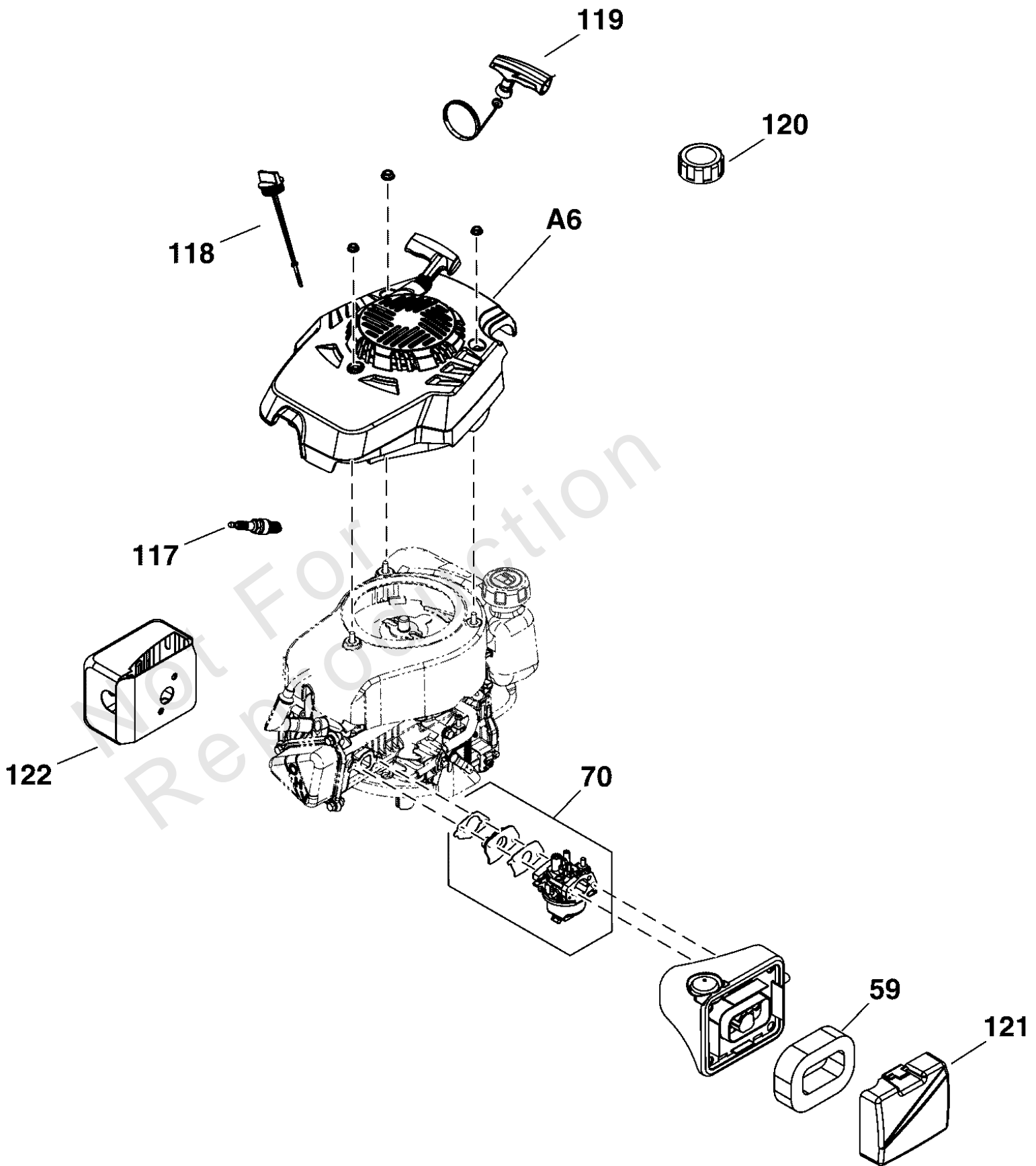
Engine & Blade Group

REF NO	PART NO	QTY	DESCRIPTION
2	CA09574A	1	BLADE BAR ASSEMBLY -(Includes Ref. Nos. 2-1, 2-2, 2-3, 2-4, 2-5)
2-1	-----	1	KEY, Woodruff
2-2	-----	1	SLEEVE, Engine
2-3	-----	1	BLADE BAR, 16"
2-4	-----	1	WASHER, Blade Bar
2-5	-----	1	BOLT, Blade Bar
3	CH87722A	1	PULLEY
12	CH87799A	1	BELT
13	CH87800A	1	COVER, Belt -(Includes Ref. Nos. 13-1, 13-2)
13-1	-----	1	COVER, Belt
13-2	-----	1	BOLT, HEX, FLANGE, M6x12
20	-----	1	ENGINE, SE560
21	HA28284D	3	BOLT, Engine Mounting, M8 x 25
50	CA09582A	1	BLADE BAR ASSEMBLY -(Includes Ref. Nos. 2-3, 2-4, 2-5)
2-3	-----	1	BLADE BAR, 16"
2-4	-----	1	WASHER, Blade Bar
2-5	-----	1	BOLT, Blade Bar

Engine Service Parts

Note: Unless noted otherwise, use the standard torque specifications

Mfg. No: 881880



Engine Service Parts

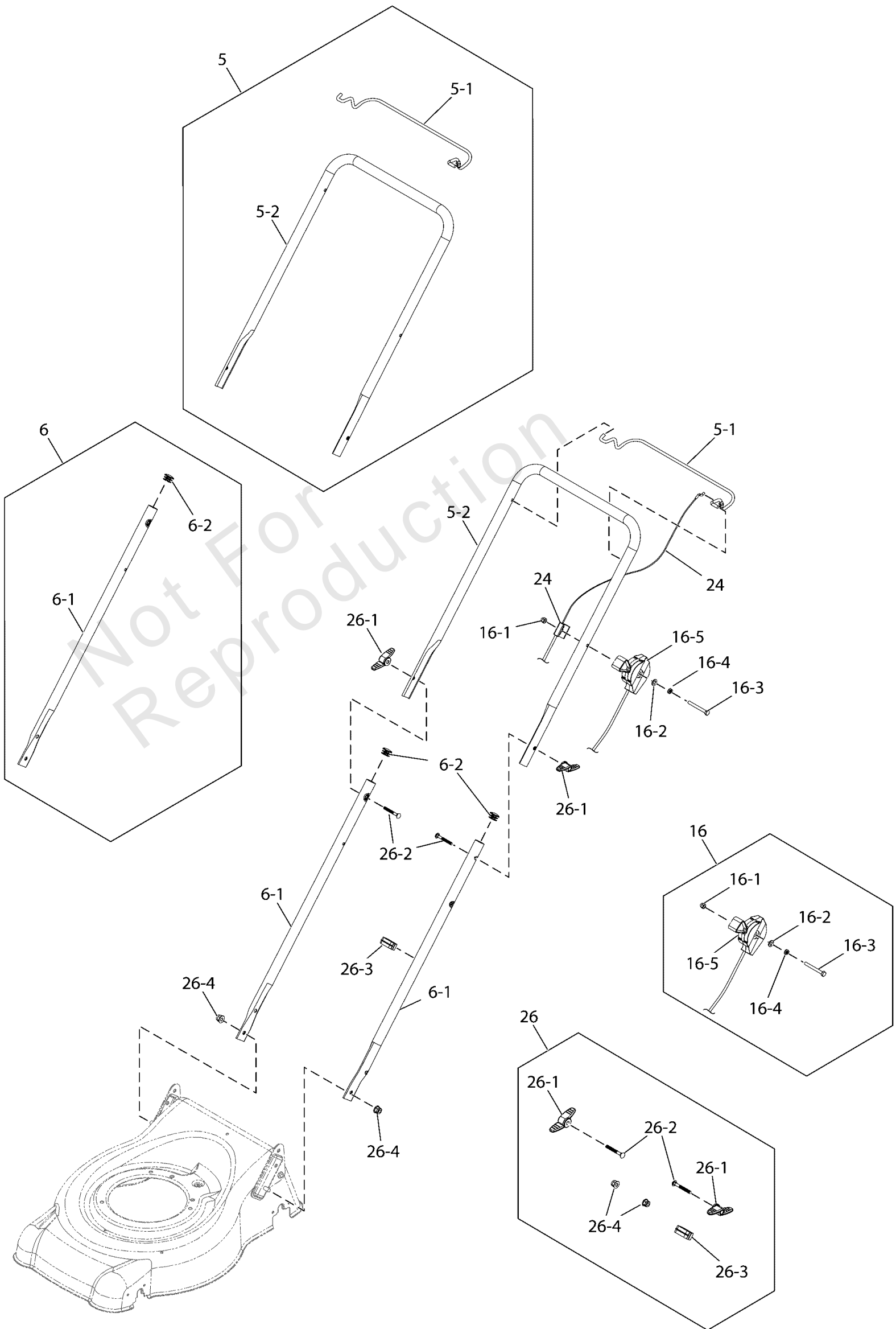
REF NO	PART NO	QTY	DESCRIPTION
A6	EE15052A	1	STARTER, Rewind
59	EE15104A	1	ELEMENT, Air Filter
70	EE15343A	1	KIT, Carburetor
117	EE15339A	1	SPARK PLUG, LD K7TC
118	EE15342A	1	KIT, Dip Stick
119	EE15344A	1	KIT, Starter Cord
120	EE15341A	1	FUEL CAP ASSEMBLY
121	EE15340A	1	COVER, Air Filter SE560
122	EE15345A	1	KIT, Muffler SE560

Not For Reproduction

Handles & Control Group

Note: Unless noted otherwise, use the standard torque specifications

Mfg. No: 881880



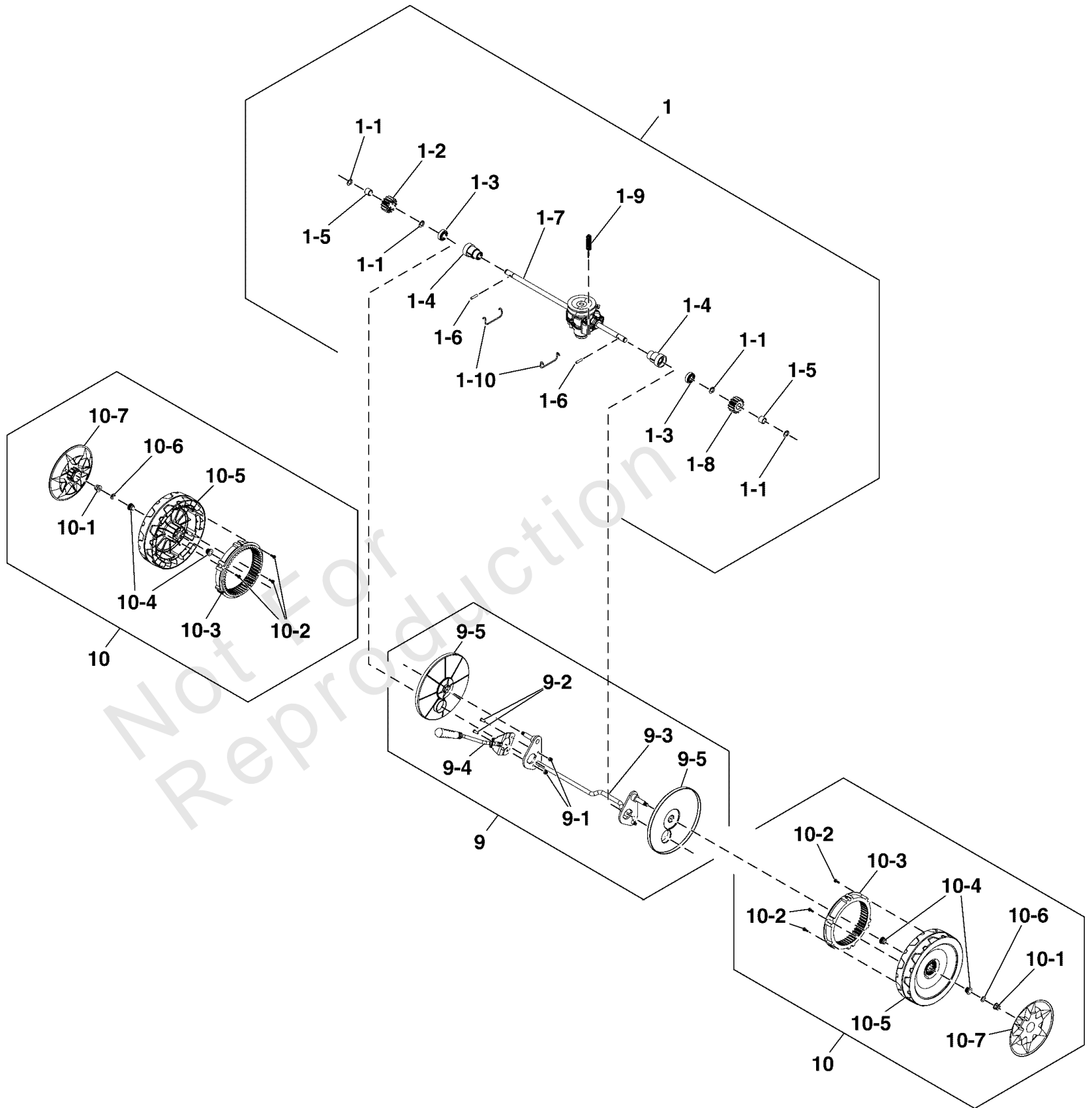
Handles & Control Group

REF NO	PART NO	QTY	DESCRIPTION
5	CH87731A	1	HANDLE, Upper Assembly -(Includes Ref. Nos. 5-1, 5-2)
5-1	-----	1	Self Propel control lever
5-2	CH87730A	1	HANDLE, Upper
6	CH87802A	2	HANDLE, Lower Assembly -(Includes Ref. Nos. 6-1, 6-2)
6-1	-----	1	HANDLE, Lower
6-2	-----	1	PLUG, Handle
16	TC04472A	1	THROTTLE CONTROL KIT -(Includes Ref. Nos. 16-1, 16-2, 16-3, 16-4, 16-5)
16-1	-----	1	NUT, Hex Flange, M6
16-2	-----	1	WASHER, 6
16-3	-----	1	BOLT, Hex Flange, M6 x 55
16-4	-----	1	WASHER, Spring Lock, Single Coil
16-5	TC05077A	1	THROTTLE CONTROL ASSEMBLY
24	CH87797A	1	CABLE, Self Propelled, Control -(Not a serviceable part)
26	PA50704A	1	KIT, Knobs & Fasteners
26-1	-----	2	KNOB, Nut
26-2	-----	2	BOLT, Carriage M6 x 40
26-3	-----	1	CLIP, Throttle Cable
26-4	-----	2	NUT, Hex Head, Flange, M8

Rear Axle Group

Note: Unless noted otherwise, use the standard torque specifications

Mfg. No: 881880



Rear Axle Group

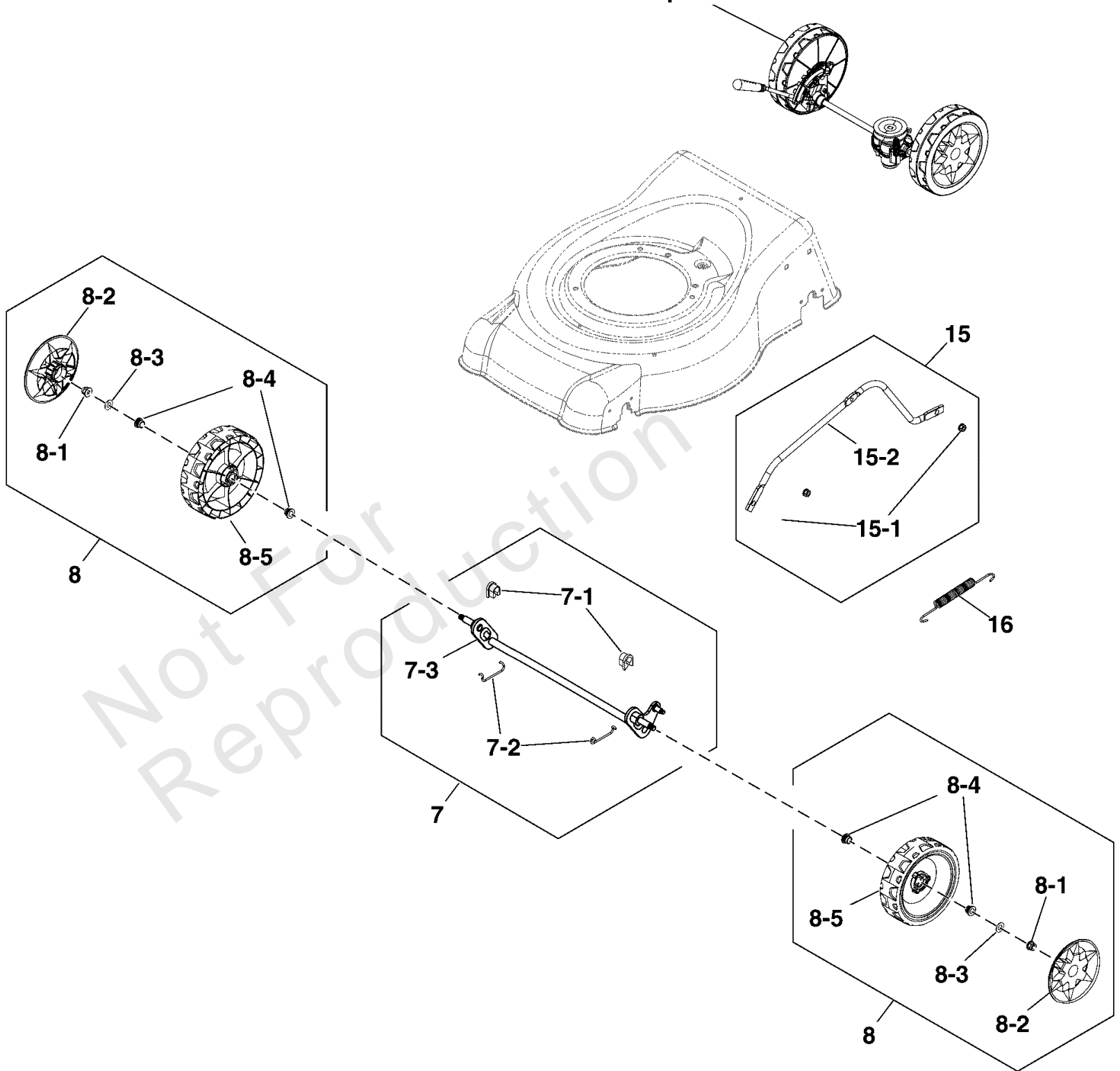
REF NO	PART NO	QTY	DESCRIPTION
1	CH87778A	1	GEARBOX ASSEMBLY -(Includes Ref. Nos. 1-1, 1-2 1-3, 1-4, 1-5, 1-6, 1-7, 1-8, 1-9, 1-10)
1-1	-----	4	CIRCLIP, 12
1-2	-----	1	DRIVE GEAR, Right
1-3	-----	2	BALL BEARING, 6001-2Z
1-4	-----	2	BUSH, Plastic
1-5	-----	2	BUSH, Gearbox
1-6	-----	2	PIN, Straight, 5x21.5
1-7	-----	1	GEARBOX
1-8	-----	1	DRIVE GEAR, Left
1-9	-----	1	SPRING, Tension
1-10	-----	2	SPRING, Clip
9	CH87751A	1	REAR AXLE ASSEMBLY -(Includes Ref. Nos. 9-1, 9-2, 9-3, 9-4, 9-5)
9-1	-----	2	NUT, Self-locking, M5
9-2	-----	2	BOLT, Hex, M5 x 12
9-3	-----	1	Rear Axle
9-4	-----	1	HANDLE, Height Adjustment
9-5	-----	2	WHEEL 203, Internal Gear
10	CH87755A	1	REAR WHEEL ASSEMBLY -(Includes Ref. Nos. 10-1, 10-2 10-3, 10-4, 10-5, 10-6, 10-7)
10-1	-----	1	NUT, Nyloc, M8
10-2	-----	3	ST 4.2x16
10-3	-----	1	GEAR, Internal, Wheel
10-4	-----	2	BUSH, Axle
10-5	-----	1	WHEEL, 203
10-6	-----	1	WASHER, 8
10-7	-----	1	COVER, Wheel

Wheels Group

Note: Unless noted otherwise, use the standard torque specifications

Mfg. No: 881880

Reference Rear Axle Group



Wheels Group

REF NO	PART NO	QTY	DESCRIPTION
7	CH87733A	1	FRONT AXLE ASSEMBLY -(Includes Ref. Nos. 7-1, 7-2, 7-3)
7-1	-----	2	BUSH, Axle
7-2	-----	2	SPRING, Clip
7-3	-----	1	FRONT AXLE
8	CH87745A	1	WHEEL ASSEMBLY, 165 -(Includes Ref. Nos. 8-1, 8-2, 8-3, 8-4, 8-5)
8-1	-----	1	NUT, Nyloc, M8
8-2	-----	1	COVER, Wheel
8-3	-----	1	WASHER
8-4	-----	2	BUSH, Axle
8-5	-----	1	WHEEL, 165
15	CH87884A	1	CONNECTING LINK ASSEMBLY -(Includes Ref. Nos. 15-1, 15-2)
15-1	-----	2	NUT, M6
15-2	-----	1	CONNECTING LINK
16	CH87796A	1	SPRING, Connecting Link

Not For Reproduction

Hardware Identification & Torque Specifications

Torque Specification Chart								
FOR STANDARD METRIC MACHINE HARDWARE (Tolerance ± 20%)								
Property Class	5.6		8.8		10.9		12.9	
	Class 5.6		Class 8.8		Class 10.9		Class 12.9	
Size Of Hardware	in/lbs	Nm.	in/lbs	Nm.	in/lbs	Nm.	in/lbs	Nm.
	ft/lbs		ft/lbs		ft/lbs		ft/lbs	
M3	5.88	.56	13.44	1.28	19.2	1.80	22.92	2.15
M4	13.44	1.28	30.72	2.90	43.44	4.10	52.56	4.95
M5	26.4	2.50	60.96	5.75	5.97	8.10	7.15	9.7
M6	44.64	4.3	7.3	9.9	10.3	14	12.1	16.5
M7	5.2	7.1	12.1	16.5	16.9	23	19.9	27
M8	7.7	10.5	17.7	24	25	34	29	40
M10	15	21	35	48	50	67	59	81
M12	26	36	61	83	86.2	117	103	140
M14	42	58	101	132	136	185	162	220
M16	64	88	147	200	210	285	250	340
M18	89	121	202	275	287	390	346	470
M20	126	171	290	390	405	550	486	660
M22	169	230	390	530	559	745	656	890
M24	217	295	497	375	708	960	840	1140
M27	320	435	733	995	1032	1400	1239	1680
M30	435	590	995	1350	1401	1900	1681	2280
M33	590	800	1349	1830	1902	2580	2278	3090
M36	759	1030	1740	2360	2441	3310	2935	3980
M39	988	1340	2249	3050	3163	4290	3798	5150

Torque Specification Chart						
FOR STANDARD MACHINE HARDWARE (Tolerance ± 20%)						
Hardware Grade	No Marks		SAE Grade 5		SAE Grade 8	
	SAE Grade 2		SAE Grade 5		SAE Grade 8	
Size Of Hardware	in/lbs	Nm.	in/lbs	Nm.	in/lbs	Nm.
	ft/lbs		ft/lbs		ft/lbs	
8-32	19	2.1	30	3.4	41	4.6
8-36	20	2.3	31	3.5	43	4.9
10-24	27	3.1	43	4.9	60	6.8
10-32	31	3.5	49	5.5	68	7.7
1/4-20	66	7.6	8	10.9	12	16.3
1/4-28	76	8.6	10	13.6	14	19.0
5/16-18	11	15.0	17	23.1	25	34.0
5/16-24	12	16.3	19	25.8	29	34.0
3/8-16	20	27.2	30	40.8	45	61.2
3/8-24	23	31.3	35	47.6	50	68.0
7/16-14	30	40.8	50	68.0	70	95.2
7/16-20	35	47.6	55	74.8	80	108.8
1/2-13	50	68.0	75	102.0	110	149.6
1/2-20	55	74.8	90	122.4	120	163.2
9/16-12	65	88.4	110	149.6	150	204.0
9/16-18	75	102.0	120	163.2	170	231.2
5/8-11	90	122.4	150	204.0	220	299.2
5/8-18	100	136	180	244.8	240	326.4
3/4-10	160	217.6	260	353.6	386	525.0
3/4-16	180	244.8	300	408.0	420	571.2
7/8-9	140	190.4	400	544.0	600	816.0
7/8-14	155	210.8	440	598.4	660	897.6
1-8	220	299.2	580	788.8	900	1,244.0
1-12	240	326.4	640	870.4	1,000	1,360.0

The guides and ruler furnished below are designed to help you select the appropriate hardware.



Nut, M8

Thread Diameter (mm)

Inside Diameter (in) Threads per inch

Nut, 1/2-16



Screw, M8- 1.25 x 25

Thread Diameter (mm) Distance between threads (mm) Body Length (mm)

Body Diameter Threads per inch Body Length (in)

Screw, 1/2- 16 x 2



Standard Hardware Sizing

When a washer or nut is identified as 1/2" (M8), this is the *Nominal size*, meaning the *inside diameter* is 1/2 inch (8mm metric thread diameter); if a second number is present it represents the *threads per inch* (distance between threads).

When bolt or capscrew is identified as 1/2 - 16 x 2" (M8 - 1.25 x 50), this means the *Nominal size*, or body diameter is 1/2 inch (8mm metric thread diameter), the second number, 16, represents the *threads per inch*, (*distance between threads*). The final number is the body length of the bolt or screw, 2 inches (50mm).

NOTES

- These torque values are to be used for all hardware excluding: locknuts, self-tapping screws, thread forming screws, sheet metal screws and socket head setscrews.
- Recommended seating torque values for locknuts:
 - for prevailing torque locknuts - use 65% of grade 5 torques.
 - for flange whizlock nuts and screws - use 135% of grade 5 torques.
- Unless otherwise noted on assembly drawings, all torque values must meet this specification.

Common Hardware Types

Hex Head Capscrew



Washer



Carriage Bolt



Hex Nut

Wrench & Fastener Size Guide

1/4" Bolt or Nut Wrench—7/16"	5/16" Bolt or Nut Wrench—1/2"	3/8" Bolt or Nut Wrench—9/16"	7/16" Bolt or Nut Wrench (Bolt)—5/8" Wrench (Nut)—11/16"	1/2" Bolt or Nut Wrench—3/4"
M6 Bolt or Nut Wrench—10mm	M8 Bolt or Nut Wrench—13mm	M10 Bolt or Nut Wrench—17mm	M12 Bolt or Nut Wrench—19mm	M14 Bolt or Nut Wrench—22mm

YARD KING