



OUTDOOR POWER EQUIPMENT

HOME GARDENER MK II

	<u>Part number</u>	<u>Model</u>	<u>Engine</u>
MASPORT	550904	MK II 4 WAY	B & S Series 475

Month and Year of First Manufacture - February 2009

From Serial Number - 7191721

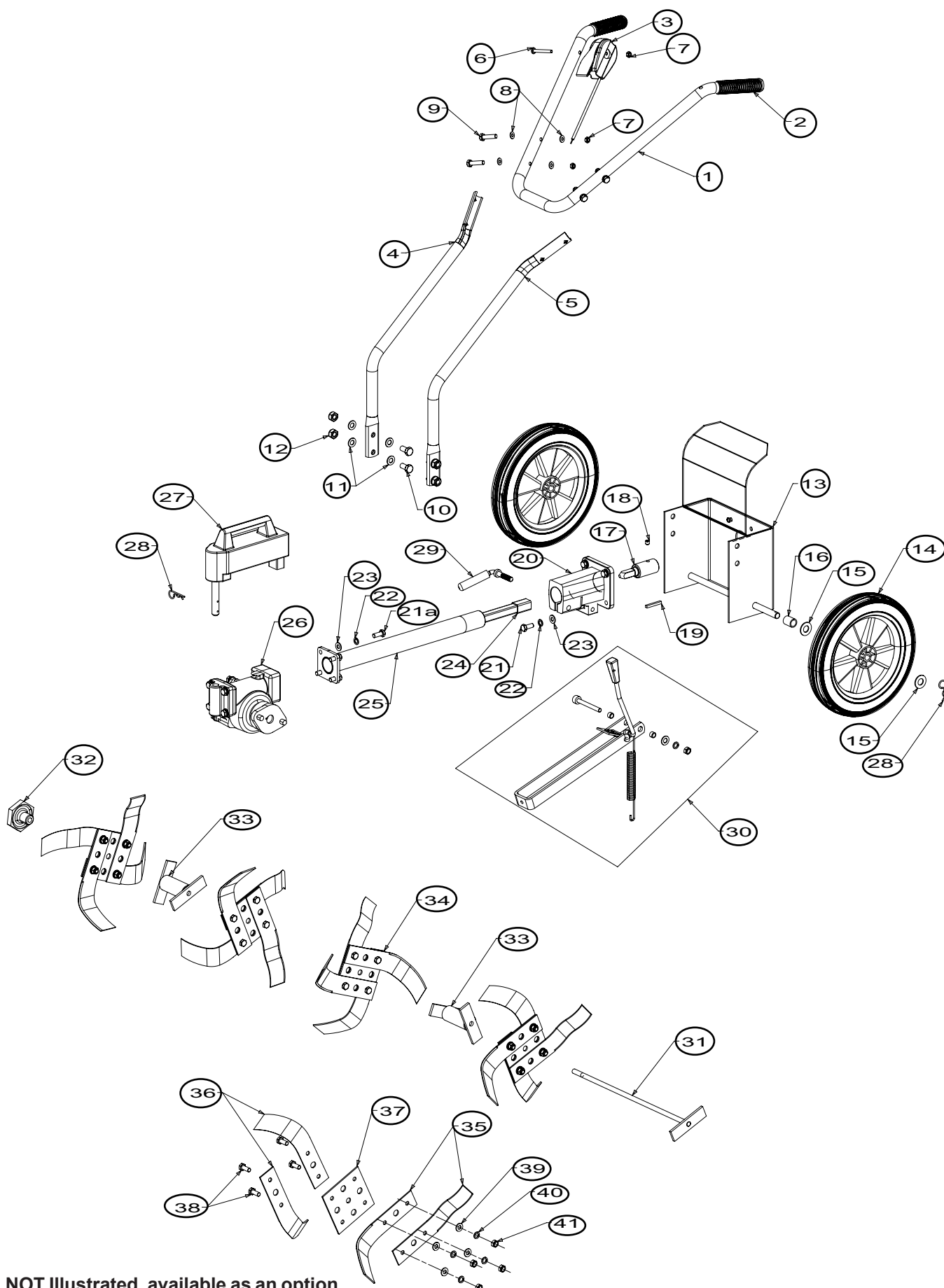




Masport

HOME GARDENER MK II

Issue B.0
April 2013
ECN 11464
REF # 750904



NOT Illustrated, available as an option
555790 Tine Shield - Titanium (Silver)

When ordering PLEASE QUOTE PART NUMBER & Description, NOT Illustration No.
Determine right or left hand side from standing in operating position (standing at handle)

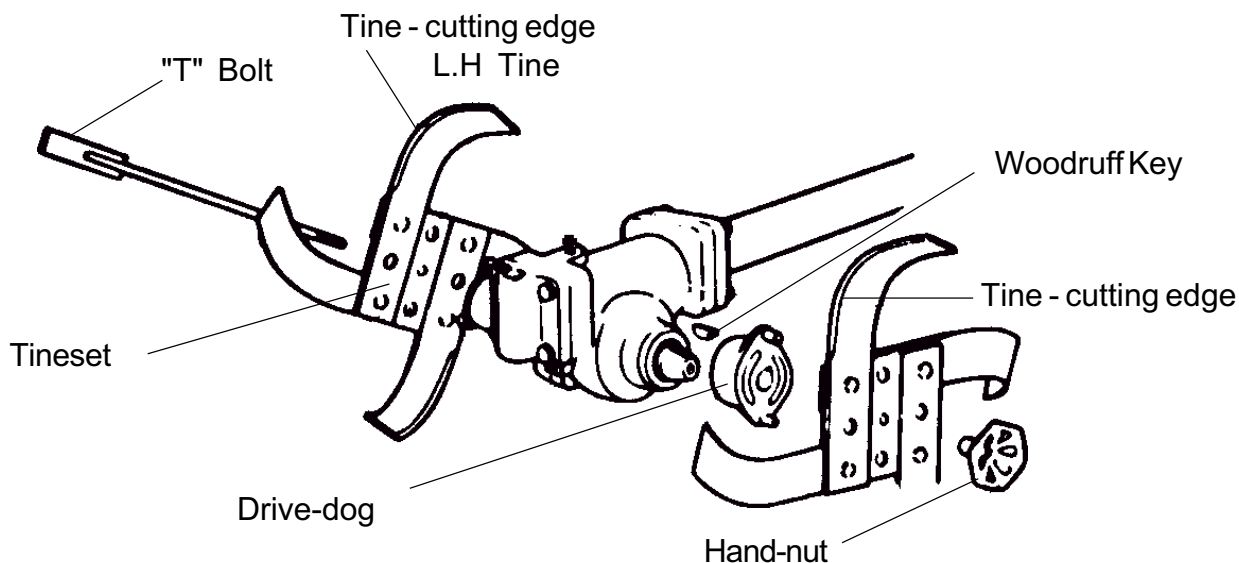


Masport

HOME GARDENER MK II

Issue B.0
April 2013
ECN 11464
REF # 750904

Item No	Part No	Description	Qty	Item No	Part No	Description	Qty
1	950143	Handle- Upper, Silver HG	1	31	550013	T Bolt, 14-1/2" (370mm)	1
2	550368	Handle Grip, Plastic	2	32	550016	Nut- Hand, T Bolt	1
3	583458	Control- Throttle Assy Wescon	1	33	950015	Spacer- Tine	2
4	950145	Handle- Lower, RH Silver HG	1	34	550062	Tine Assy	4
5	950144	Handle- Lower, LH Silver HG	1	35	550040	*Tine- Curved, RH HG	8
6	503604	Screw, Pan M6x45	1	36	550041	*Tine- Curved, LH HG	8
7	501764	Nut, M6 Nylocx 6 Thck	5	37	950009	*Plate- Tine	4
8	501703	Washer, Flt 6x14x1.2	4	38	501597	*Screw, Set M8x20 Hex	16
9	501815	Screw, Set M6x35	4	39	501744	*Washer, Flt 8x17x1.6	16
10	501760	Screw, Set M10x20	4	40	503747	*Washer, Spg 8	16
11	501704	Washer, Flt 10x19x1.6	8	41	501602	*Nut, M8 Hex	16
12	501680	Nut, M10 Nyloc 10 Thck	4			__==__	
13	950382	Chassis Assy, HG	1			NOT ILLUSTRATED	
14	550010	Wheel & Tyre Assy, HG	2	555064		Owner Manual	1
15	501743	Washer, Flt 14x28x1.8	4	503488		Clamp- Cable, Throttle	1
16	550367	Spacer- Wheel, Axle	2	503489		Screw, Set M5x16	1
		__==__				Consumables	
17	550164	Coupling- Engine HG	1	503335		Oil, Gear Head 250 ml HG	1
18	503386	Screw, Grub M8x8	1			Gear Head Components	
19	536012	Key- Engine 3/16"SQ x 38	1	502038		Washer, Copper-Crush 12x16	
20	550393	Housing, Drive Casting (Titanium)	1	502039		Washer, Copper-Crush 14x20	
21	501345	Screw, Set NF 5/16x1.25 Hex	4	502064		Brg,Bal 20x52x15xx6304	
21a	501597	Screw, Set M8x20	4	502067		Circlip, 20 EXT DIN 471	
22	503747	Washer, Spg 8	8	503416		Plug-1/4" BSPT Hex Pressure HT	
23	501744	Washer, Flt 8x17x1.6	8	550049		Gasket Tine Shaft	
24	550357	Drive Shaft	1	550117		Plug-M12 x 1.25P Hex Pressure	
25	550312	Outer Tube Assy- Drive	1	550336		Gasket-Bearing Cover Plate	
26	950334	Gear Head Assembly(Basic)	1	550378		Seal, Oil 25x40x10	
		__==__		550379		Seal, Oil 19x35x10	
26	550333	Gear Head Assy & Drivers incl	1	950003		Gear Shaft WormWheel	
26	500012	*Key- Woodruff 3/16"x3/4"	2	950005		Washer Thrust	
26	550012	*T Bolt 7 1/2 (190mm)	1	950007		Cover-Plate, Ball Race	
26	550016	*Nut-Hand, T Bolt	1	950031		Wormwheel-28T	
26	550006	*Driver-Gearbox	1	950095		Washer-Shim 0.127mm	
27	550106	Weight- Stabiliser, Cast	1	950096		Washer-Shim 0.254mm	
28	530281	Clip- Hairpin, Large HG	3	950329		Worm,20mm Brg	
29	550018	Locking Clamp- Bolt	1	950331		Gear Case Bushed	
30	550327	Stand Assy- Support HG incl	1	950335		Plate Cover, Front	
30	550319	Spring- Stand	1				
				Note - Number Change Only (April 2013)			
				Was 550158 Handle - Lower RH Now 950145			
				Was 550157 Handle - Lower LH Now 950144			
				Was 550156 Handle - Upper Now 950143			



NOTE: To determine right or left hand tine - hold tine in horizontal position with cutting edge uppermost and pointing away from you.

If the tip curves to the left - tine is "Left Hand"

If the tip curves to the right - tine is "Right Hand"

NOTE: Left or Right hand side of the machine is determined when standing in the operating position

NOTE: Early models of this product manufactured prior to the year 2000 used an Imperial designed gearbox. Parts in this type of gearbox are no longer able to be replaced and a replacement metric designed gearbox assembly 550333 (Item 26 page 2) is now recommended.

Home Gardener Edger



Lawn Edger Kit 555069

555069	Lawn Edger Kit	1
550076	* Spacer - Edger Set	1
550046	* "T" Bolt 11" (285mm)	1
550077	* Edge Trimmer Blade	1

For the assembly of these products,
refer to page 5

Home Gardener Cultivating Tool



Home Gardener Brush





Masport

HOME GARDENER MK II

Issue B.0
April 2013
ECN 11464
REF # 750904

MASPORT HOME GARDENER ACCESSORY KIT **PART NUMBER - 550019**

This KIT contains the following items,

- A. **550012** 1 x 7.5 inch (190mm) 'T' Bolt, used to convert your set of fitted four tines down to two.
- B. **550046** 1 x 11 inch (280mm) 'T' Bolt, used to secure the Edger Disc, Cultivating Tool or Brush.
- C. **550076** 1 x Spacer Drive
- D. **550077** 1 x Edger Disc
- E. **550078** 1 x Cultivating/Aeration Tool
- F. **550136** 1 x BrushRemove the Tines from your HOME GARDENER and place aside to a safe place.
Retain the 'Hand Nut' for use to attach other accessories

Edging Tool - (Requires items B, C & D)

To Fit : Slide the 11inch (280mm) 'T' Bolt(B) through the Edger Disc(D) and Spacer Drive(C) then through the GearHead. Ensure that the Lugs on the Spacer engage with the corresponding holes on the Edger Disc. The Edger Disc must revolve forward therefore the short side of each tooth should be in the leading position. Tighten the Hand-nut onto the 'T' Bolt to secure the assembly.

Cultivating/Aeration Tool - (Requires items B, C & E)

To Fit : Slide the 11inch (280mm) 'T' Bolt(B) through the Cultivating Tool(E) and Spacer Drive(C) then through the GearHead. Tighten the Hand-nut to secure the assembly.

Loosen the clamp that holds the extension shaft and twist the GearHead 90 degrees, tighten clamp.

Brush - (Requires items B & F, plus one spacer drive)

To fit : Slide the 11 inch (280mm) 'T' Bolt(B) through the Brush(F) and a Tine Spacer, then through the GearHead. Tighten the Hand-nut to secure the assembly.

Loosen the clamp that holds the extension shaft and twist the GearHead 90 degrees, tighten clamp.

NOTE HAND-NUT Not include with kit

