



Parts Manual

Mfg. No: 2691804-00
Yard King, 16" Steel Walk Behind Mower

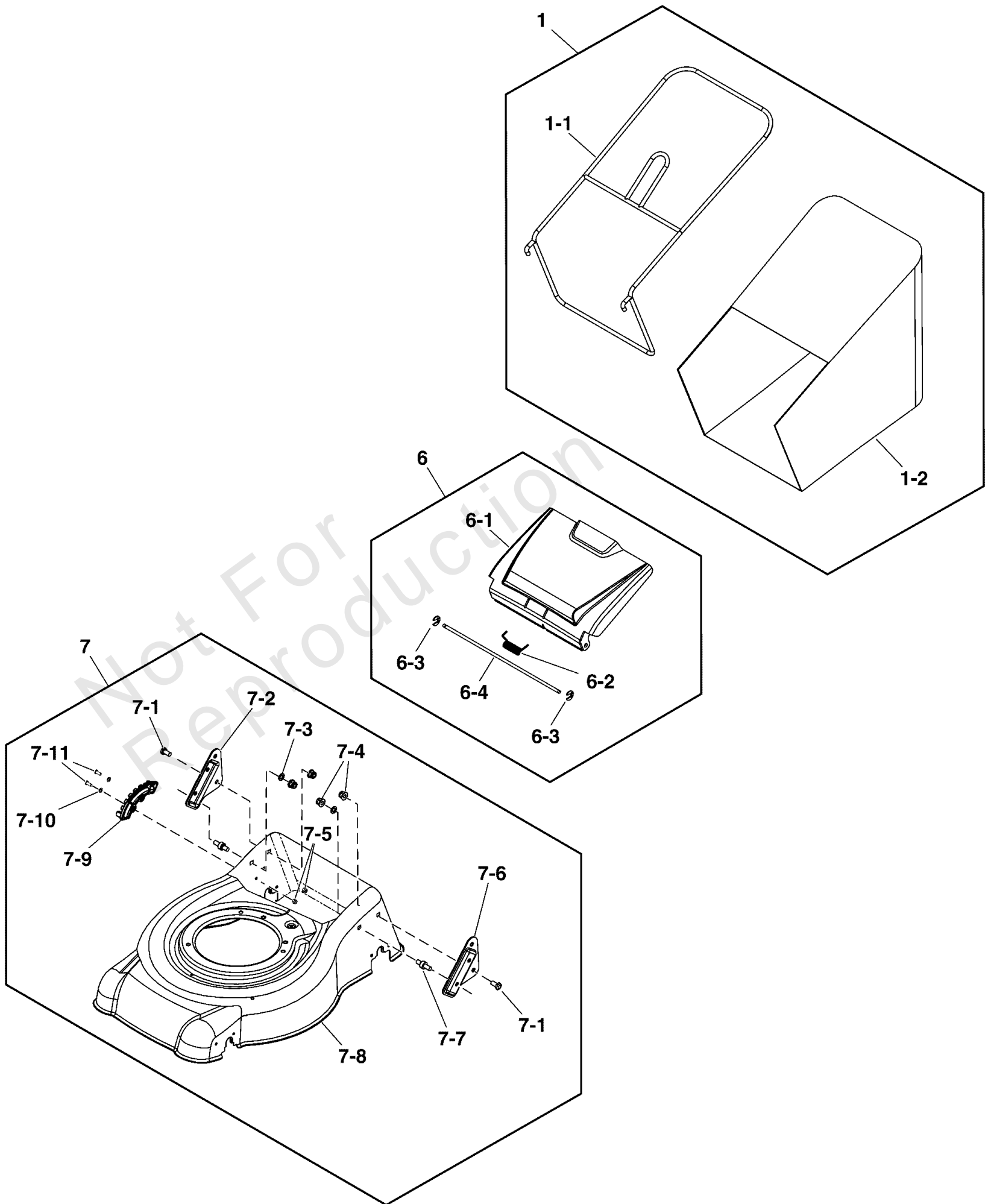
Model Components	Page
Deck & Catcher Group.....	4
Engine & Blade Group.....	6
Engine Service Parts.....	8
Handles & Controls Group.....	10
Wheels Group.....	12
Torque Specification Chart.....	14

Not For
Reproduction

Deck & Catcher Group

Note: Unless noted otherwise, use the standard torque specifications

Mfg. No: 2691804-00



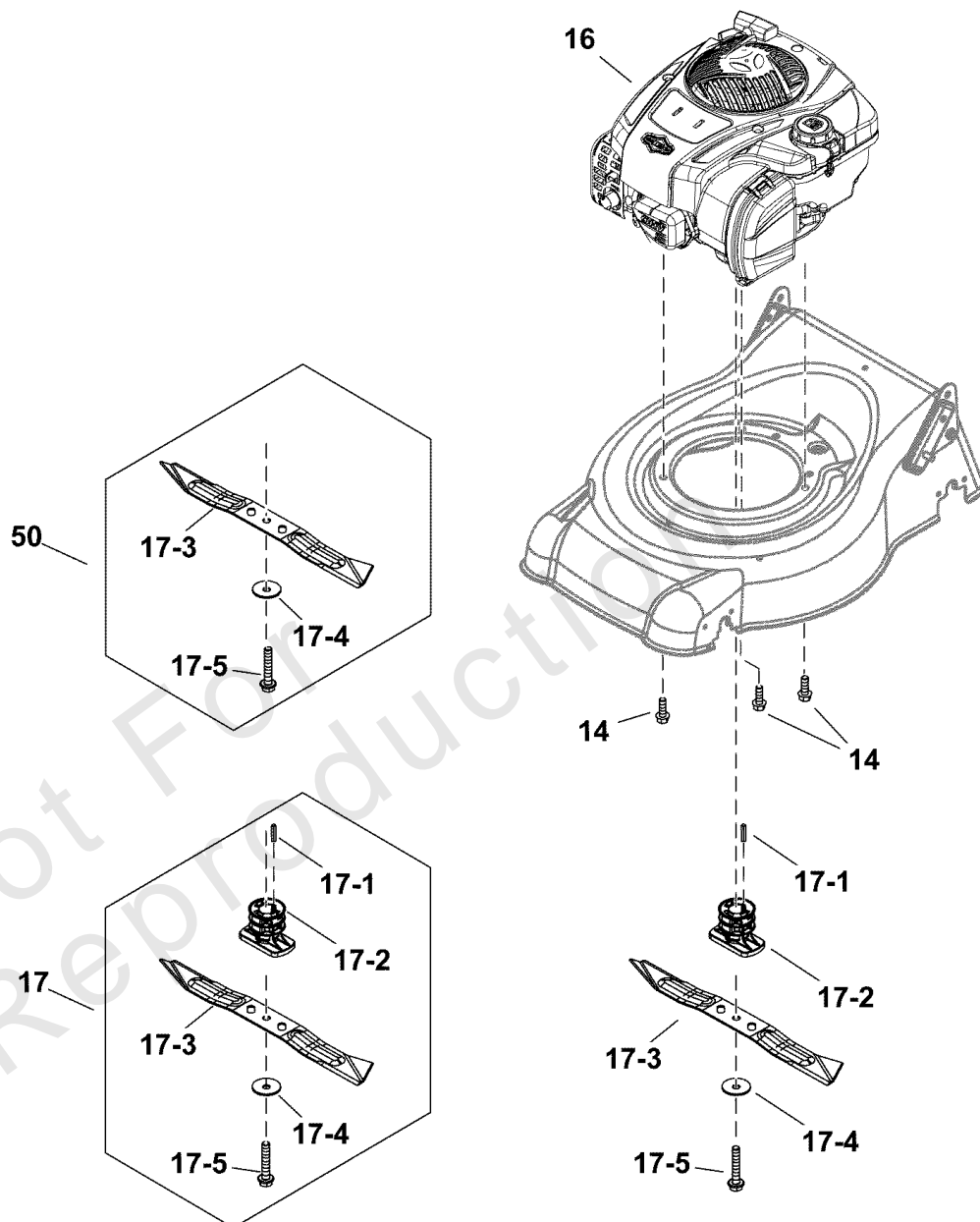
Deck & Catcher Group

REF NO	PART NO	QTY	DESCRIPTION
1	CH87726A	1	GRASS CATCHER ASSEMBLY -(Includes Ref. Nos. 1-1, 1-2)
1-1	-----	1	FRAME, Grass Catcher, 16" Deck
1-2	-----	1	BAG, Grass Catcher, 16" Deck
6	CH87759A	1	REAR FLAP ASSEMBLY -(Includes Ref. Nos. 6-1, 6-2, 6-3, 6-4)
6-1	-----	1	FLAP, Rear
6-2	-----	1	SPRING, Rear Flap
6-3	-----	2	RETAINING RING, E6
6-4	-----	1	ROD, Rear Flap Pivot
7	-----	1	MOWER DECK ASSEMBLY, Yellow
7-1	-----	2	BOLT, M8 x 16
7-2	-----	1	BRACKET, Lower Handle, RH
7-3	-----	2	WASHER
7-4	-----	4	NUT, Hex Head, Flange, M8
7-5	-----	2	NUT, Nyloc, M5
7-6	-----	1	BRACKET, Lower Handle, LH
7-7	-----	2	BOLT
7-8	-----	1	DECK
7-9	CH87768A	1	BRACKET, Height Adjustment
7-10	-----	2	WASHER, 5
7-11	-----	2	BOLT, Hex, M5 x 12

Engine & Blade Group

Note: Unless noted otherwise, use the standard torque specifications

Mfg. No: 2691804-00



Engine & Blade Group

REF NO	PART NO	QTY	DESCRIPTION
14	80104746	1	KIT, 3 BOLTS, Hex Flange, M8 x 25
16	80089825		* ENGINE, SE130, 127CC -(Refer to Note: *) (Engine style may vary from illustration)
16	80112117		ENGINE, V170 Packed Single Carton
17	80082446	1	BLADE MOUNTING ASSEMBLY -(Includes Ref. Nos. 17-1, 17-2, 17-3, 17-4, 17-5)
17-1	-----	1	KEY, Woodruff
17-2	-----	1	SLEEVE, Engine
17-3	-----	1	BLADE BAR, 16"
17-4	-----	1	WASHER, Blade Bar
17-5	-----	1	BOLT, Blade Bar
50	CA09582A	1	BLADE BAR ASSEMBLY -(Includes Ref. Nos. 17-3, 17-4, 17-5)
17-3	-----	1	BLADE BAR, 16"
17-4	-----	1	WASHER, Blade Bar
17-5	-----	1	BOLT, Blade Bar

Not For
Reproduction

Footnotes:

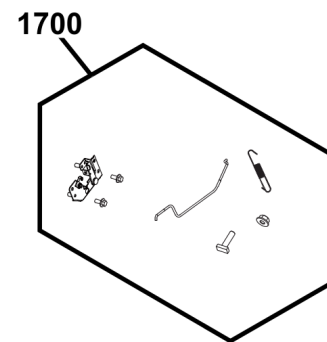
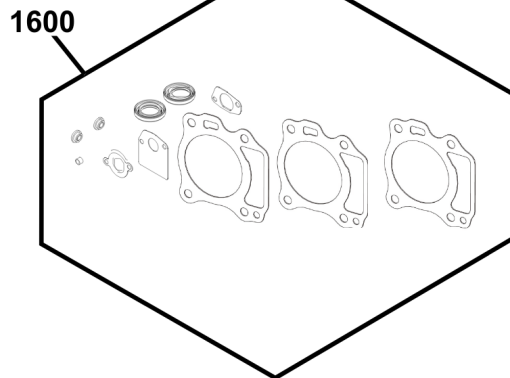
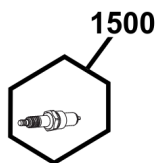
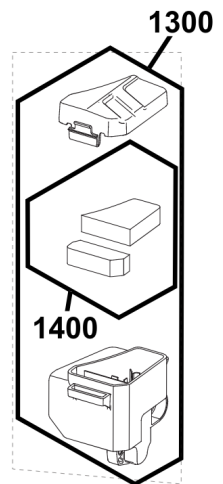
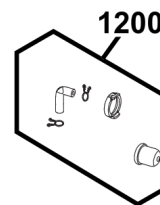
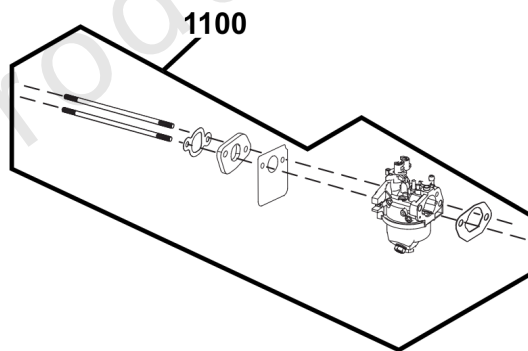
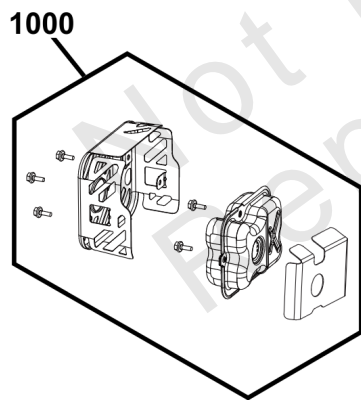
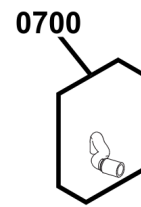
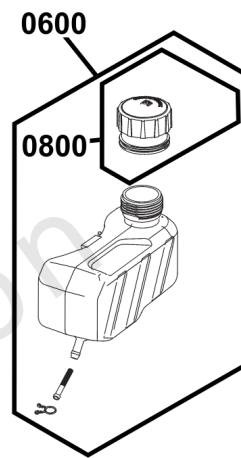
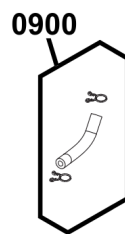
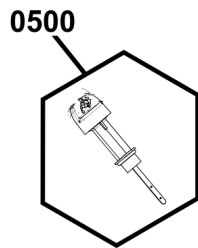
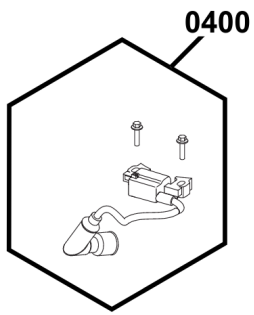
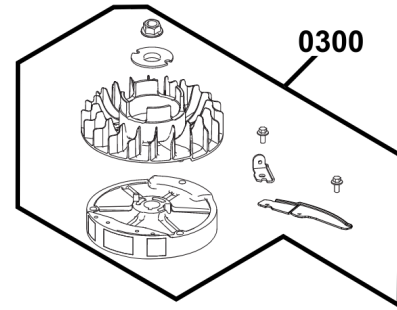
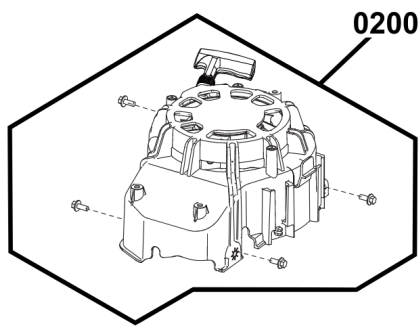
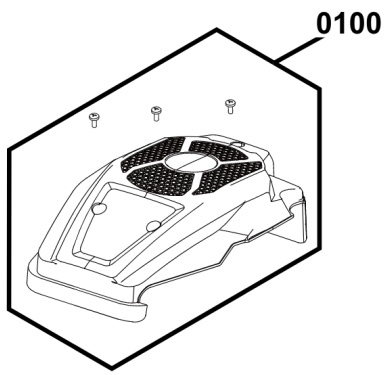
Note:* See Engine Service Parts for specific replacement parts or Service Engine for suitable service replacement engine.

Note:**Apply own Loctite with these parts.

Engine Service Parts

Note: Unless noted otherwise, use the standard torque specifications

Mfg. No: 2691804-00



Engine Service Parts

REF NO	PART NO	QTY	DESCRIPTION
0100	80105720	1	KIT, Engine Cover, Yard King
0100	80102156	1	KIT, Engine Cover, Black
0200	80102157	1	KIT, Starter Assembly
0300	80102158	1	KIT - Cooling, Fan/Flywheel V127, V144 -(For V127 and V144 engines)
0300	80106363	1	KIT - Cooling, Fan/Flywheel V170 -(For V170 engine)
0400	80102159	1	KIT - Ignition Assembly -(For V127 and V144 engines)
0400	80113857	1	KIT, Ignition Assembly V170 -(For V170 engine)
0500	80119978	1	DIPSTICK ASSEMBLY, 1/4 Turn -(Refer to Note: *)
0600	80102162	1	KIT - Fuel Tank, Assembly
0700	80103260	1	Breather tube
0800	80090539	1	CAP, Fuel Tank
0900	80102163	1	KIT - Fuel Line
1000	80102900	1	KIT, Muffler Assembly
1100	80090531	1	KIT, Carburetor Assembly, V127 -(For V127 engine)
1100	80121925	1	KIT, Carburettor Assembly, V144 -(For V144 engine)
1100	80121926	1	KIT, Carburettor Assembly, V170 -(For V170 engine)
1200	80103261	1	KIT - Prime Bulb
1300	80090532	1	KIT, Air Cleaner Assembly
1400	80090533	1	KIT, Air Filter Assembly
1500	80090535	1	PLUG, Spark
1600	80123367	1	KIT, Gasket, V-Series
1700	80102166	1	KIT - Linkages & Governor, Springs assembly

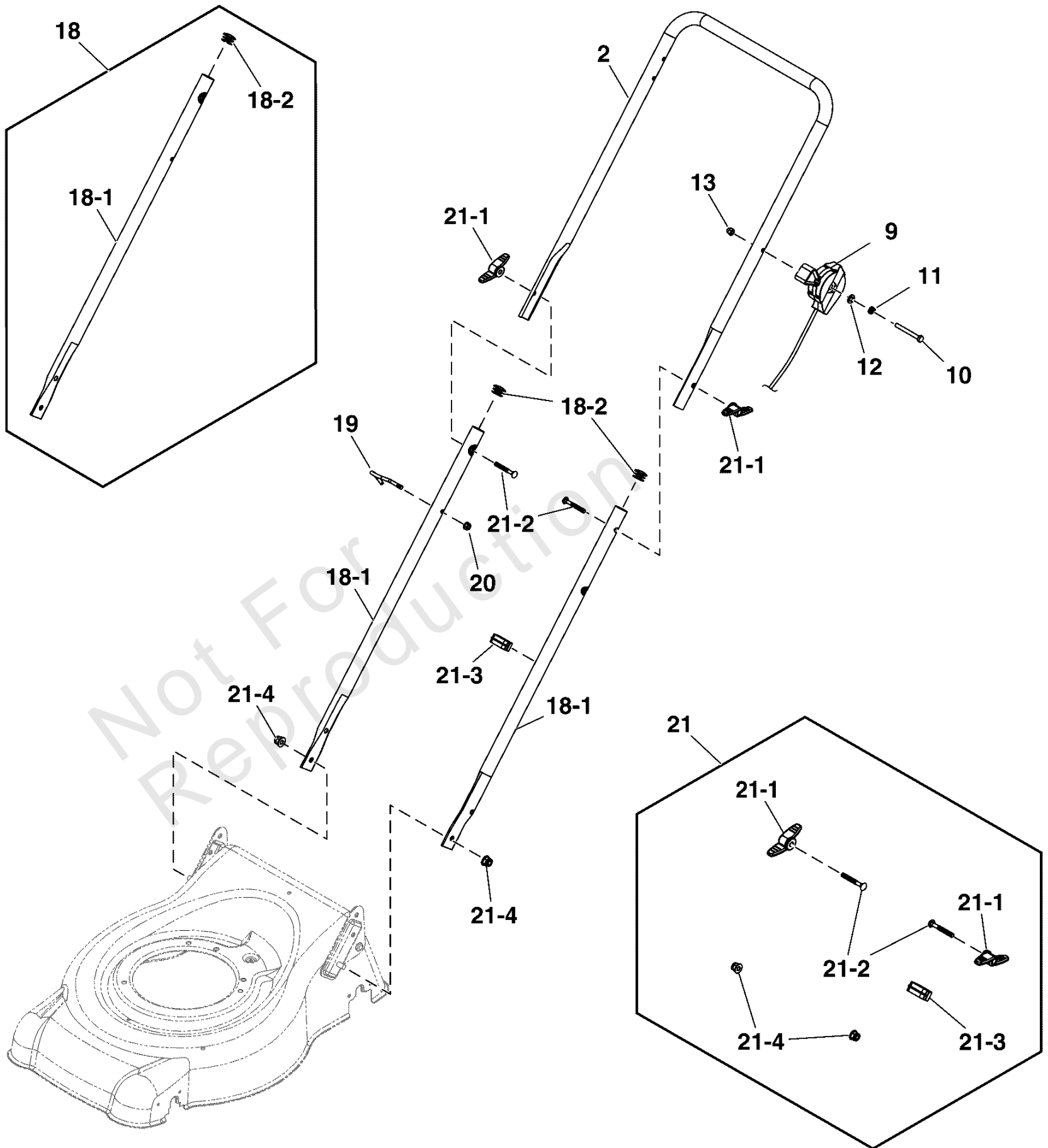
Footnotes:

Note:* Apply Loctite #263 when installing this part.

Handles & Controls Group

Note: Unless noted otherwise, use the standard torque specifications

Mfg. No: 2691804-00



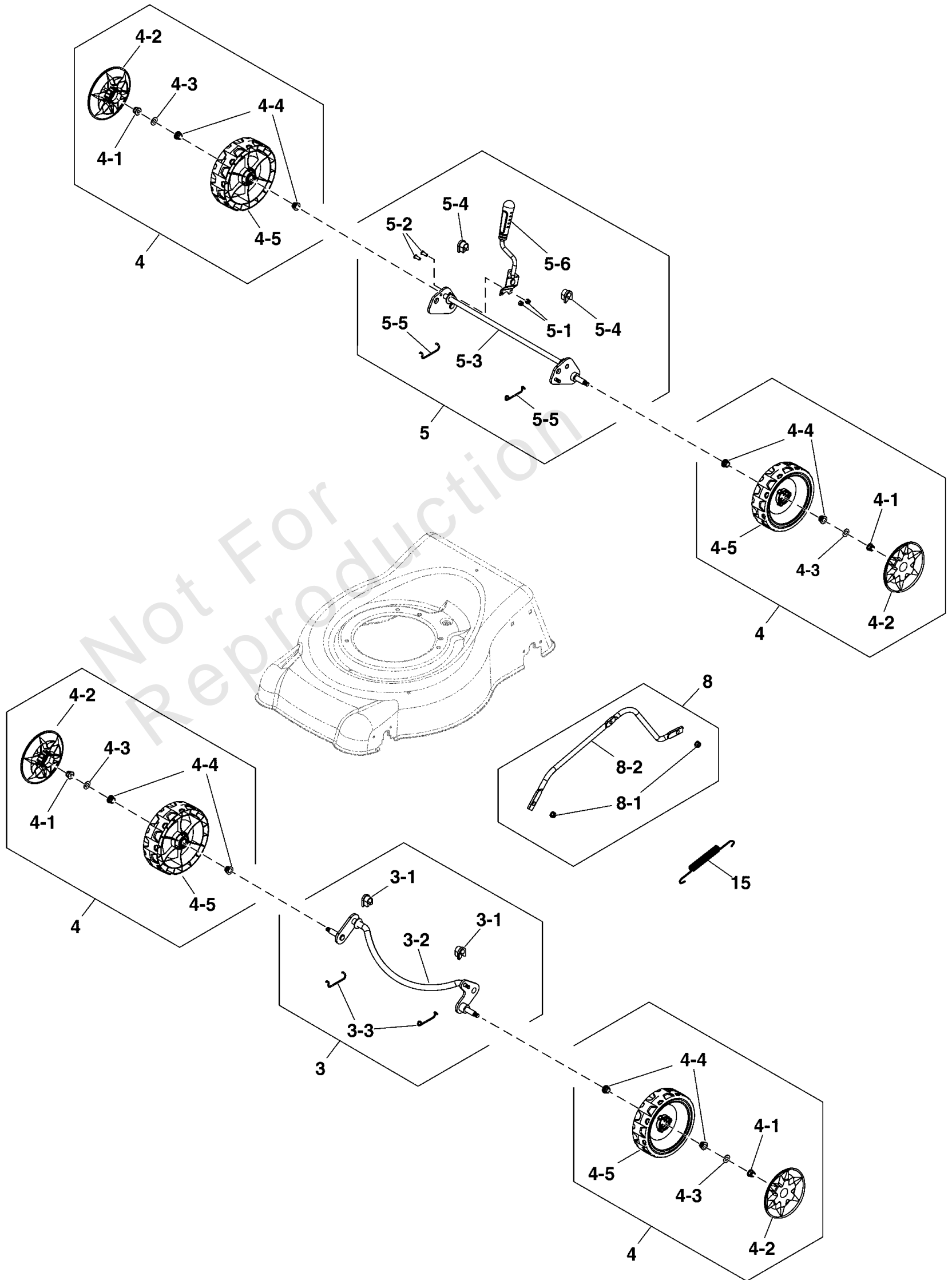
Handles & Controls Group

REF NO	PART NO	QTY	DESCRIPTION
2	CH87730A	1	HANDLE, Upper
9	80085865	1	THROTTLE CONTROL ASSEMBLY
10	-----	1	BOLT, Hex Flange, M6 x 48 -(Not a serviceable part)
11	-----	1	WASHER, Spring Lock, Single Coil -(Not a serviceable part)
12	-----	1	WASHER, 6 -(Not a serviceable part)
13	-----	1	NUT, Acorn, M6 -(Not a serviceable part)
18	CH87802A	2	HANDLE, Lower Assembly -(Includes Ref. Nos. 18-1, 18-2)
18-1	-----	1	HANDLE, Lower
18-2	-----	1	PLUG, Handle
19	-----	1	GUIDE, Rope -(Not a serviceable part)
20	-----	1	NUT, M6 -(Not a serviceable part)
21	CH87791B	1	KIT, Knobs & Fasteners -(Includes Ref. Nos. 21-1, 21-4)
21-1	-----	2	KNOB, Nut
21-2	-----	2	BOLT, Carriage M6 x 40
21-3	-----	1	CLIP, Throttle Cable
21-4	-----	2	NUT, Hex Head, Flange, M8

Wheels Group

Note: Unless noted otherwise, use the standard torque specifications

Mfg. No: 2691804-00



Wheels Group

REF NO	PART NO	QTY	DESCRIPTION
3	CH87733A	1	FRONT AXLE ASSEMBLY -(Includes Ref. Nos. 3-1, 3-2, 3-3)
3-1	-----	2	BUSH, Axle
3-2	-----	1	AXLE, Front
3-3	-----	2	SPRING, Clip
4	CH87745A	1	WHEEL ASSEMBLY, 165 -(Includes Ref. Nos. 4-1, 4-2, 4-3, 4-4, 4-5)
4-1	-----	1	NUT, Nyloc, M8
4-2	-----	1	COVER, Wheel
4-3	-----	1	WASHER
4-4	-----	2	BEARING
4-5	-----	1	WHEEL, 165
5	CH87746A	1	REAR AXLE ASSEMBLY -(Includes Ref. Nos. 5-1, 5-2, 5-3, 5-4, 5-5, 5-6)
5-1	-----	2	NUT, Hex Flange, Nyloc, M5
5-2	-----	4	BOLT, Hex, M5 x 12
5-3	-----	1	AXLE, Rear
5-4	-----	2	BUSH, Axle
5-5	-----	2	SPRING, Clip
5-6	-----	1	LEVER, Height Adjustment
8	CH87770A	1	CONNECTING LINK ASSEMBLY -(Includes Ref. Nos. 8-1, 8-2)
8-1	-----	2	NUT, M6
8-2	-----	1	LINK, Connecting
15	CH87796A	1	SPRING, Connecting Link

Hardware Identification & Torque Specifications

Torque Specification Chart								
FOR STANDARD METRIC MACHINE HARDWARE (Tolerance ± 20%)								
Property Class	5.6		8.8		10.9		12.9	
	Class 5.6		Class 8.8		Class 10.9		Class 12.9	
Size Of Hardware	in/lbs	Nm.	in/lbs	Nm.	in/lbs	Nm.	in/lbs	Nm.
	ft/lbs		ft/lbs		ft/lbs		ft/lbs	
M3	5.88	.56	13.44	1.28	19.2	1.80	22.92	2.15
M4	13.44	1.28	30.72	2.90	43.44	4.10	52.56	4.95
M5	26.4	2.50	60.96	5.75	5.97	8.10	7.15	9.7
M6	44.64	4.3	7.3	9.9	10.3	14	12.1	16.5
M7	5.2	7.1	12.1	16.5	16.9	23	19.9	27
M8	7.7	10.5	17.7	24	25	34	29	40
M10	15	21	35	48	50	67	59	81
M12	26	36	61	83	86.2	117	103	140
M14	42	58	101	132	136	185	162	220
M16	64	88	147	200	210	285	250	340
M18	89	121	202	275	287	390	346	470
M20	126	171	290	390	405	550	486	660
M22	169	230	390	530	559	745	656	890
M24	217	295	497	375	708	960	840	1140
M27	320	435	733	995	1032	1400	1239	1680
M30	435	590	995	1350	1401	1900	1681	2280
M33	590	800	1349	1830	1902	2580	2278	3090
M36	759	1030	1740	2360	2441	3310	2935	3980
M39	988	1340	2249	3050	3163	4290	3798	5150

Torque Specification Chart						
FOR STANDARD MACHINE HARDWARE (Tolerance ± 20%)						
Hardware Grade	No Marks		SAE Grade 5		SAE Grade 8	
	SAE Grade 2		SAE Grade 5		SAE Grade 8	
Size Of Hardware	in/lbs	Nm.	in/lbs	Nm.	in/lbs	Nm.
	ft/lbs		ft/lbs		ft/lbs	
8-32	19	2.1	30	3.4	41	4.6
8-36	20	2.3	31	3.5	43	4.9
10-24	27	3.1	43	4.9	60	6.8
10-32	31	3.5	49	5.5	68	7.7
1/4-20	66	7.6	8	10.9	12	16.3
1/4-28	76	8.6	10	13.6	14	19.0
5/16-18	11	15.0	17	23.1	25	34.0
5/16-24	12	16.3	19	25.8	29	34.0
3/8-16	20	27.2	30	40.8	45	61.2
3/8-24	23	31.3	35	47.6	50	68.0
7/16-14	30	40.8	50	68.0	70	95.2
7/16-20	35	47.6	55	74.8	80	108.8
1/2-13	50	68.0	75	102.0	110	149.6
1/2-20	55	74.8	90	122.4	120	163.2
9/16-12	65	88.4	110	149.6	150	204.0
9/16-18	75	102.0	120	163.2	170	231.2
5/8-11	90	122.4	150	204.0	220	299.2
5/8-18	100	136	180	244.8	240	326.4
3/4-10	160	217.6	260	353.6	386	525.0
3/4-16	180	244.8	300	408.0	420	571.2
7/8-9	140	190.4	400	544.0	600	816.0
7/8-14	155	210.8	440	598.4	660	897.6
1-8	220	299.2	580	788.8	900	1,244.0
1-12	240	326.4	640	870.4	1,000	1,360.0

The guides and ruler furnished below are designed to help you select the appropriate hardware.



Nut, M8

Thread Diameter (mm)

Inside Diameter (in) Threads per inch

Nut, 1/2-16



Screw, M8- 1.25 x 25

Thread Diameter (mm) Distance between threads (mm) Body Length (mm)

Body Diameter Threads per inch Body Length (in)

Screw, 1/2- 16 x 2



Standard Hardware Sizing

When a washer or nut is identified as 1/2" (M8), this is the *Nominal size*, meaning the *inside diameter* is 1/2 inch (8mm metric thread diameter); if a second number is present it represents the *threads per inch* (distance between threads).

When bolt or capscrew is identified as 1/2 - 16 x 2" (M8 - 1.25 x 50), this means the *Nominal size*, or body diameter is 1/2 inch (8mm metric thread diameter), the second number, 16, represents the *threads per inch*, (*distance between threads*). The final number is the body length of the bolt or screw, 2 inches (50mm).

NOTES

- These torque values are to be used for all hardware excluding: locknuts, self-tapping screws, thread forming screws, sheet metal screws and socket head setscrews.
- Recommended seating torque values for locknuts:
 - for prevailing torque locknuts - use 65% of grade 5 torques.
 - for flange whizlock nuts and screws - use 135% of grade 5 torques.
- Unless otherwise noted on assembly drawings, all torque values must meet this specification.

Common Hardware Types

Hex Head Capscrew



Washer



Carriage Bolt



Hex Nut

Wrench & Fastener Size Guide

1/4" Bolt or Nut Wrench—7/16"	5/16" Bolt or Nut Wrench—1/2"	3/8" Bolt or Nut Wrench—9/16"	7/16" Bolt or Nut Wrench (Bolt)—5/8" Wrench (Nut)—11/16"	1/2" Bolt or Nut Wrench—3/4"
M6 Bolt or Nut Wrench—10mm	M8 Bolt or Nut Wrench—13mm	M10 Bolt or Nut Wrench—17mm	M12 Bolt or Nut Wrench—19mm	M14 Bolt or Nut Wrench—22mm

YARD KING